

A composite background image showing a coastal scene. In the foreground, there's a body of water with a small boat and some yellow buoys. In the middle ground, there are several wind turbines on a rocky island. In the background, there are large, snow-capped mountains and a city skyline with buildings and a suspension bridge. The sky is blue with some clouds and a few airplanes flying.

PÅ VEIEN MOT INDIVIDTILPASSET AVLUSING – EN TILNÆRMING BASERT PÅ PRESISJONSFISKEOPPDRETT

Martin Føre, Kevin Frank, Eirik Svendsen, Leif
Magne Sunde, SINTEF Ocean

Innhold

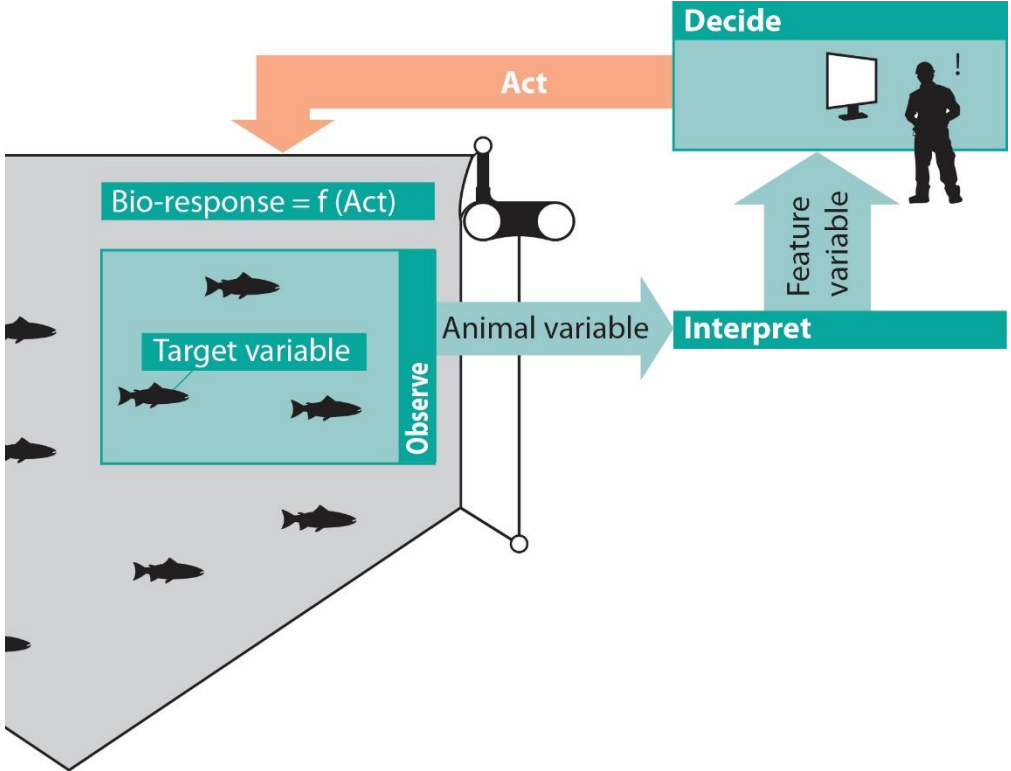
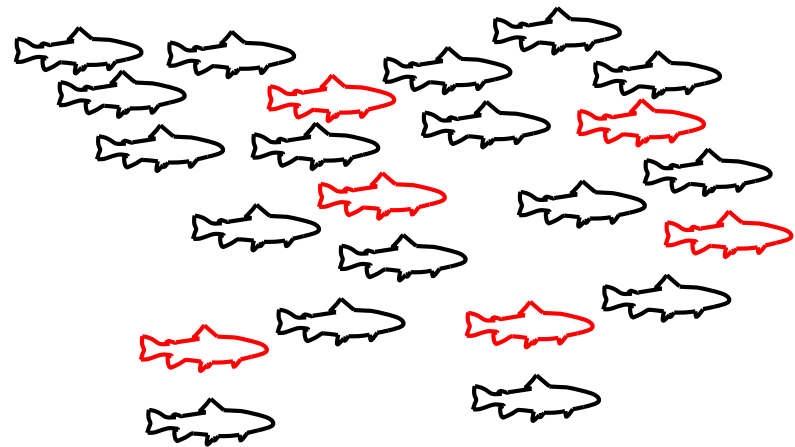
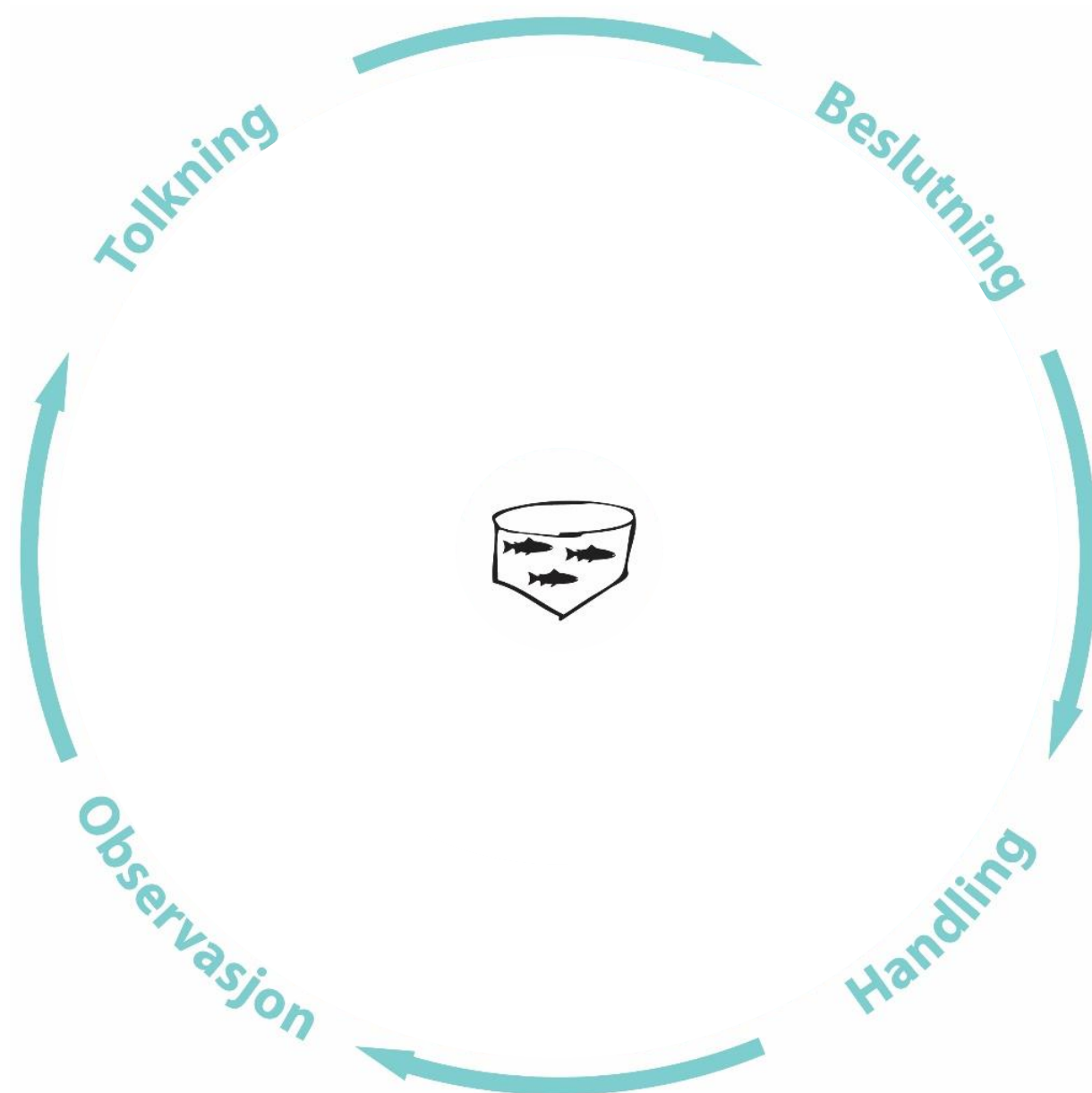


Foto: Norsk Havbrukscenter

+



Presisjonsfiskeoppdrett

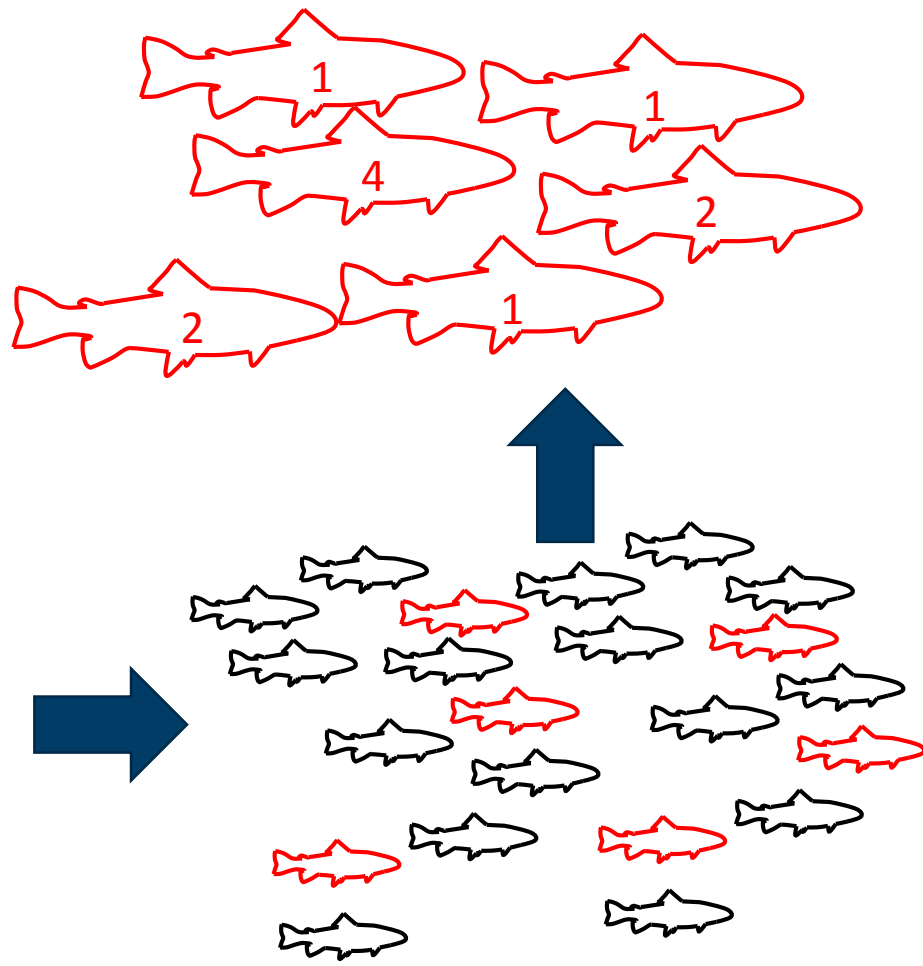


Hvorfor individbasert lusebehandling?



Med lus: 22%
Snitt lus/fisk med lus: 1.8

NB: fiktive tall



Akutt dødelighet i forbindelse med avlusning

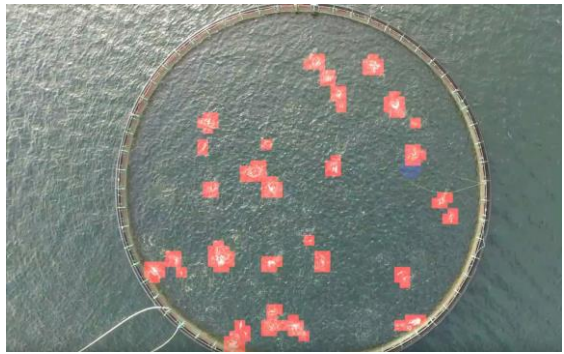
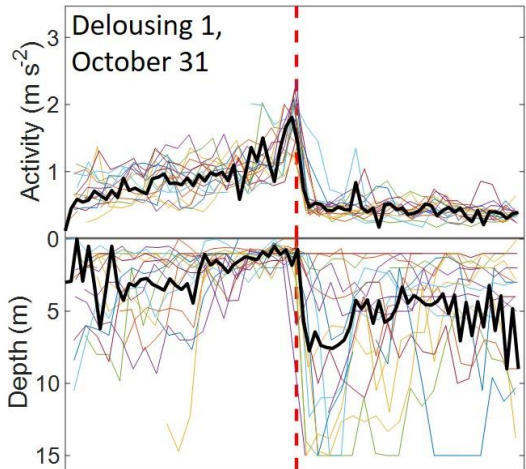
Omlag 300 tonn laks døde på SalMar-lokalitet.

Nyheter 29.02.2016

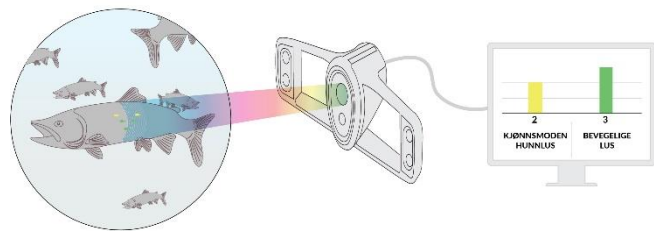
Presisjonsfiskeoppdrett + individbasert lusebehandling?

Observasjon: relevante data for individuell lusebehandling

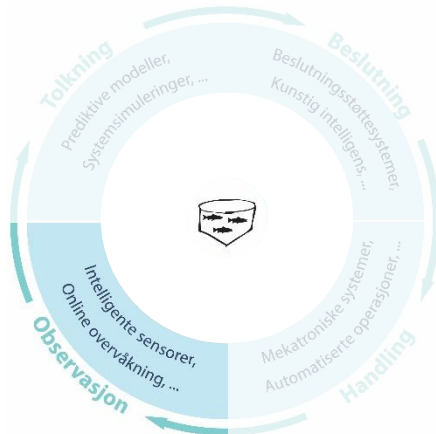
Atferd



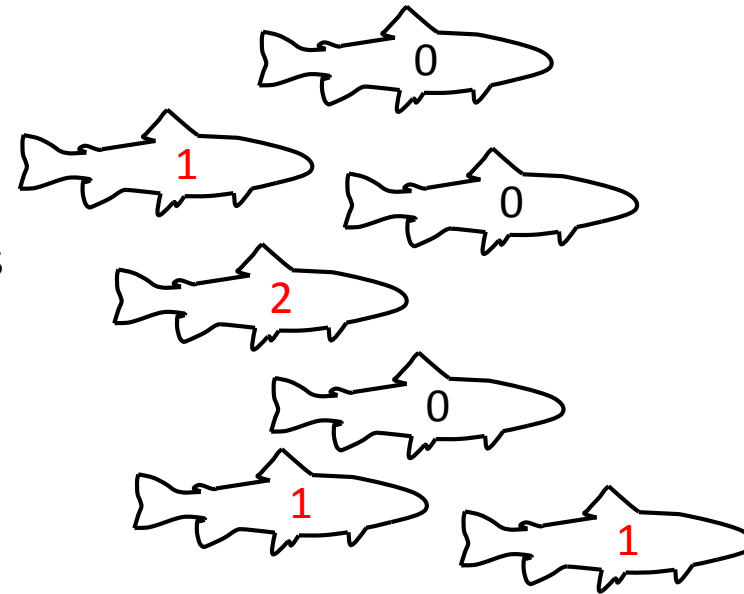
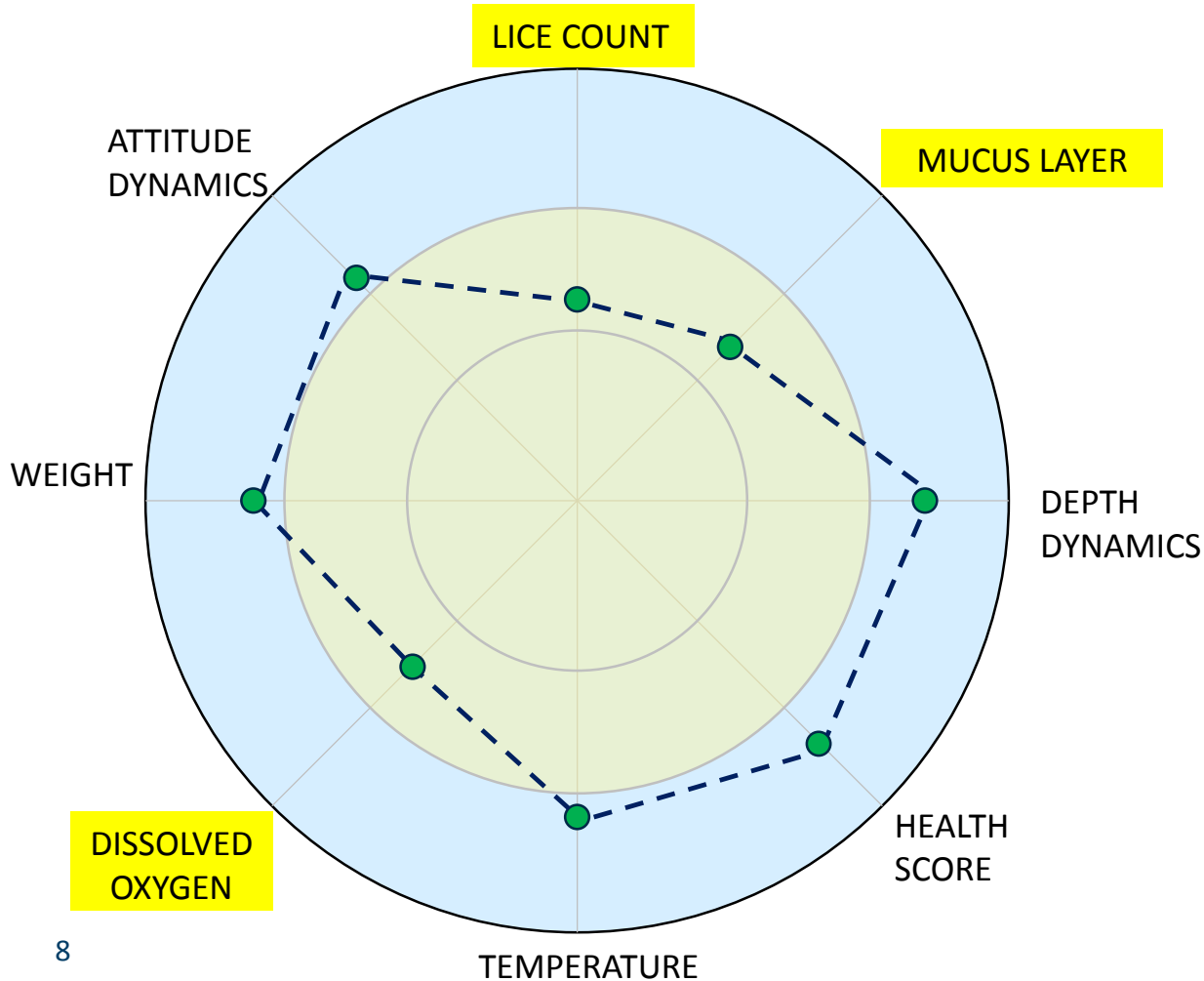
Ytre



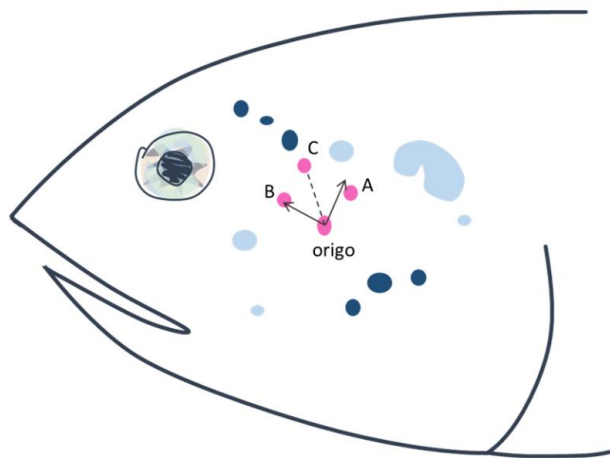
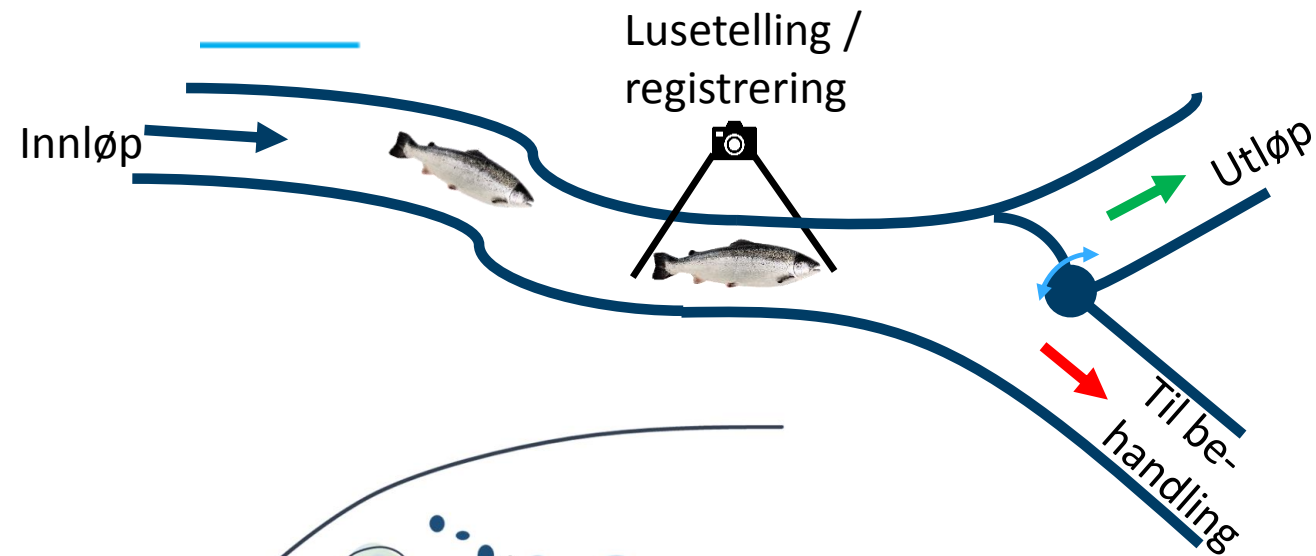
Ecotone AS



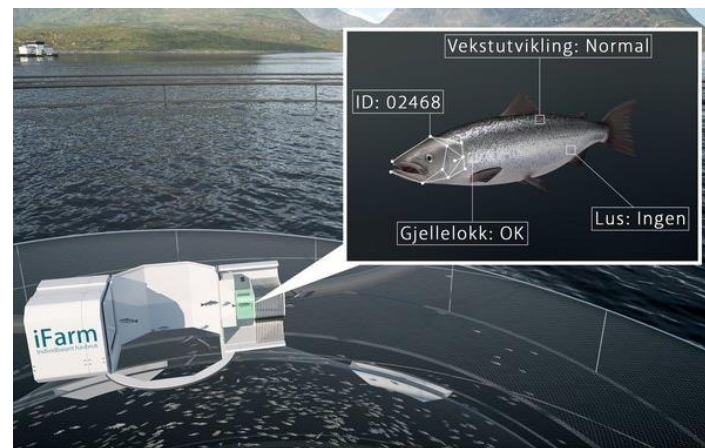
Beslutning: avlusning/ikke avlusning?



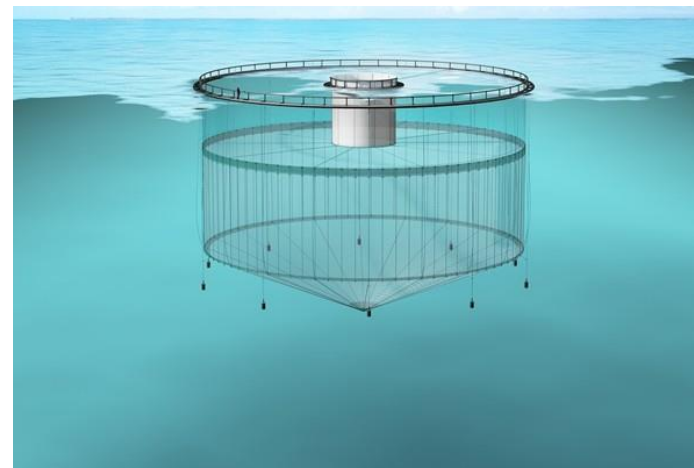
Handling: automatisert respons på beslutning



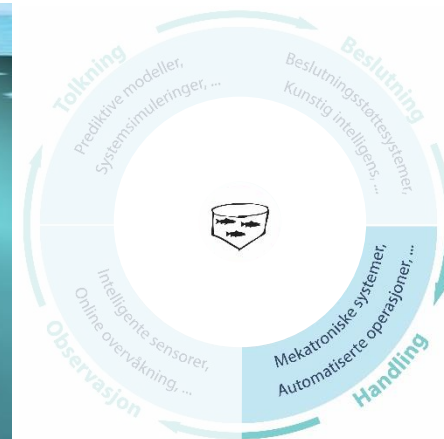
Eilertsen et al. (2017)



BioSort AS



Egersund Group AS



Hvor er forskningsbehovet størst?





Teknologi for et bedre samfunn