

© Jim Greenfield



FHF 901652 - EFFEKTIV - FHF 901692 - DOKUMENTAR

Velferd hos oppdrettet rognkjeks og bergggult i merd

Lauris Boissonnot, Camilla Karlsen, Grete Hansen Aas,
Truls Wergeland, Stig Tuene, Håvard Kaland

Lusekonferansen 2022 - Trondheim, 6. - 7. april 2022



© Fredrik Staven

Datagrunnlag

📌 6 lokaliteter

🕒 3 års oppfølging



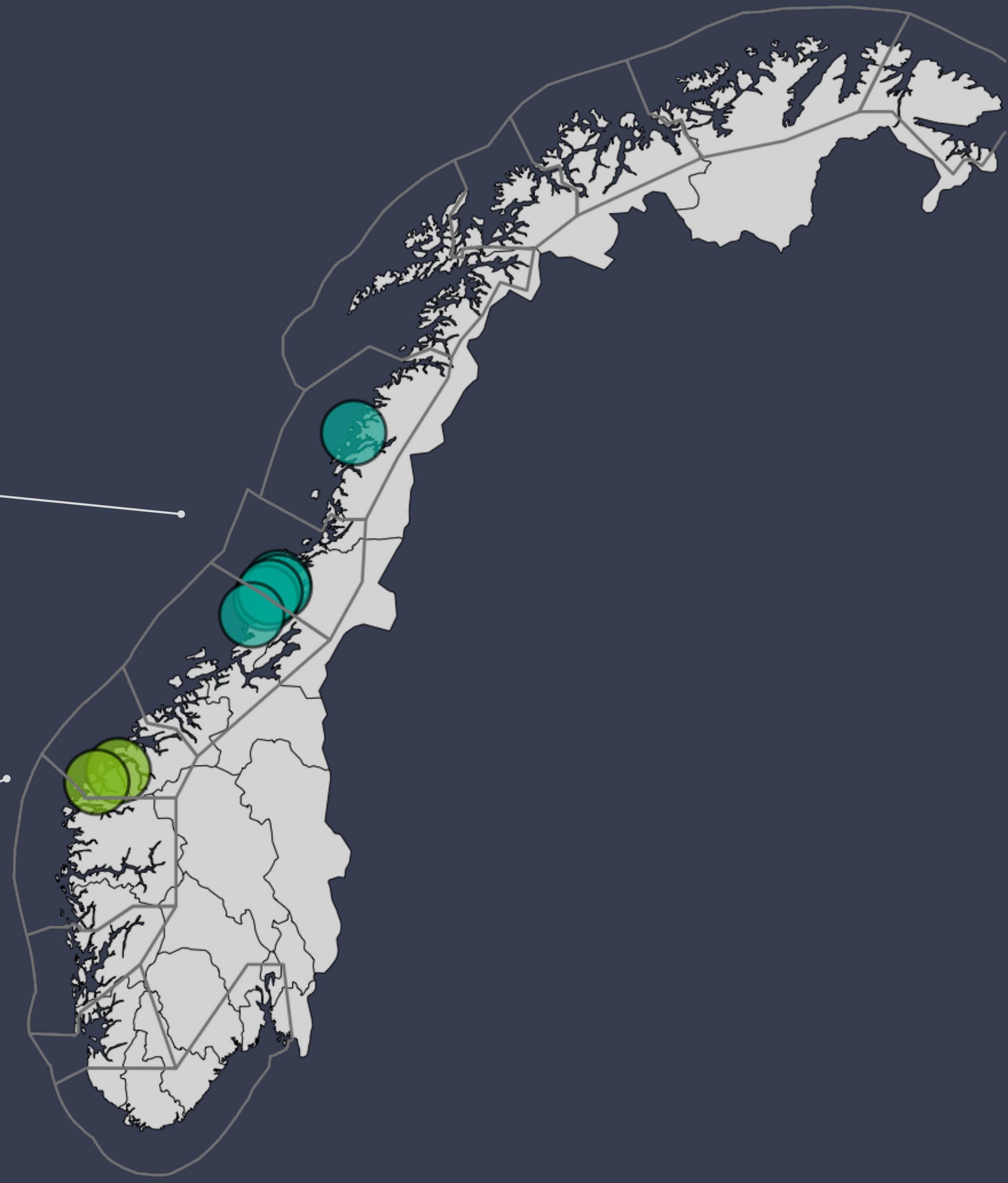
$n = 2500$

📌 2 lokaliteter

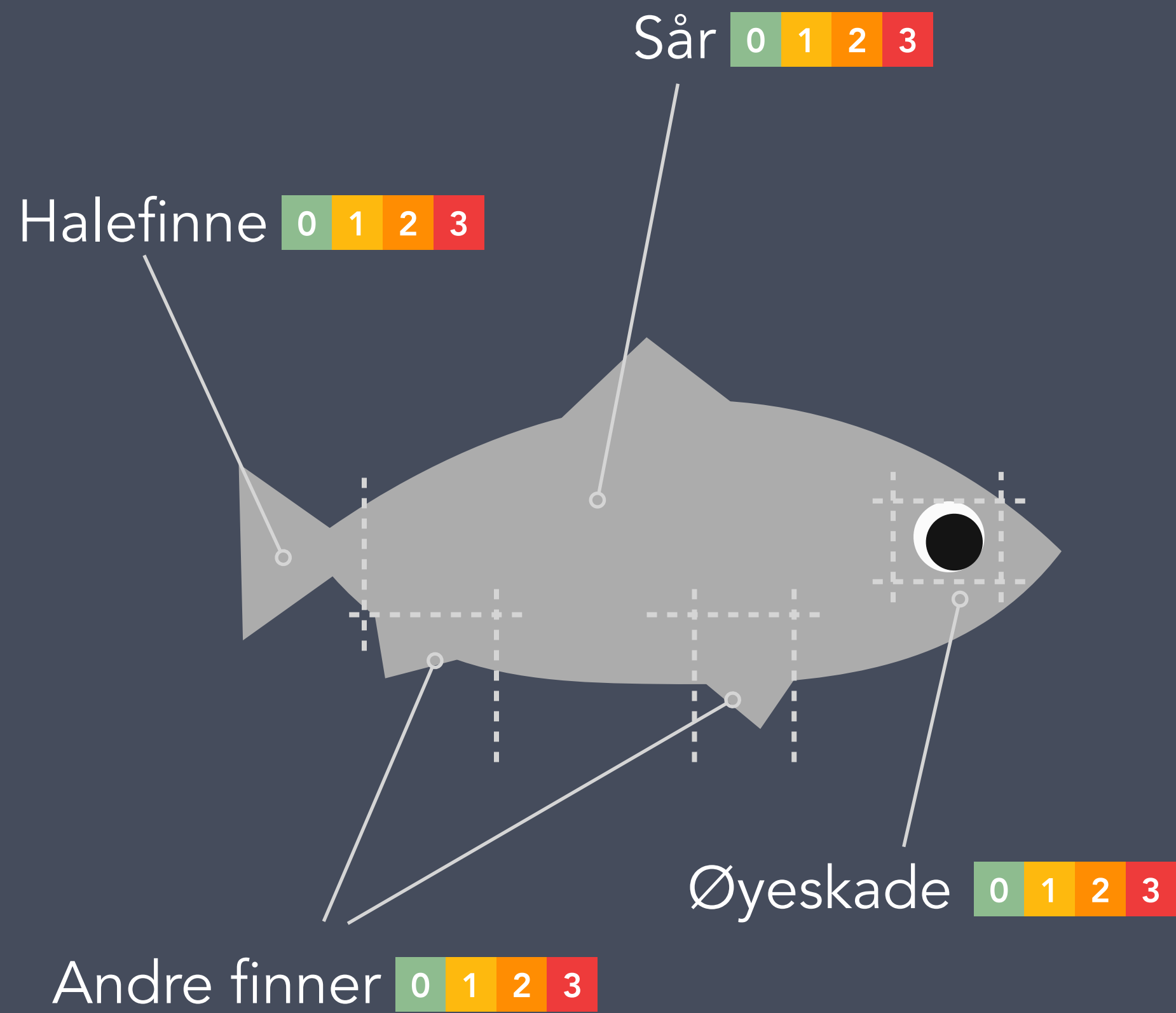
🕒 8 måneders oppfølging



$n = 460$



OVI nivå

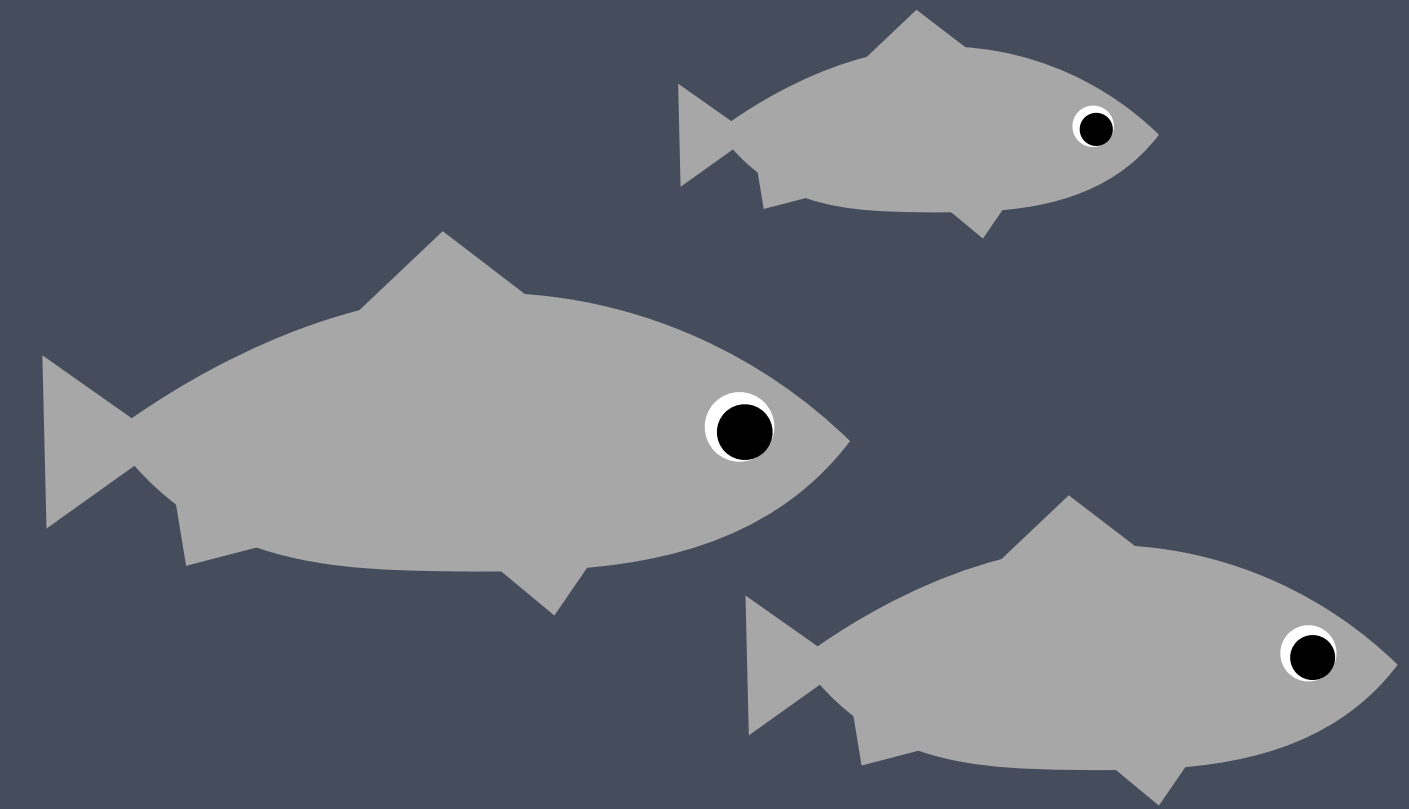
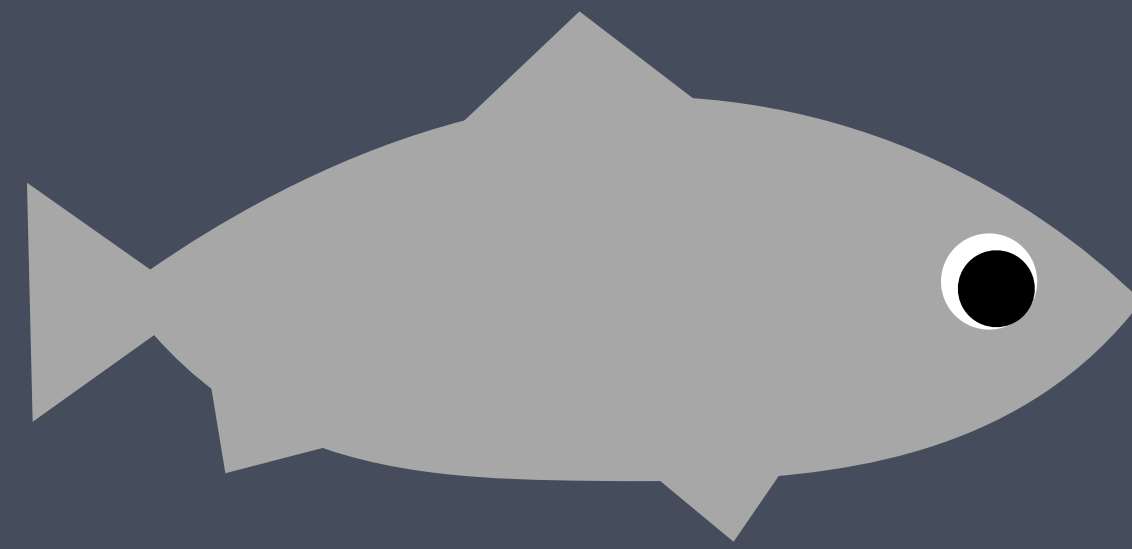
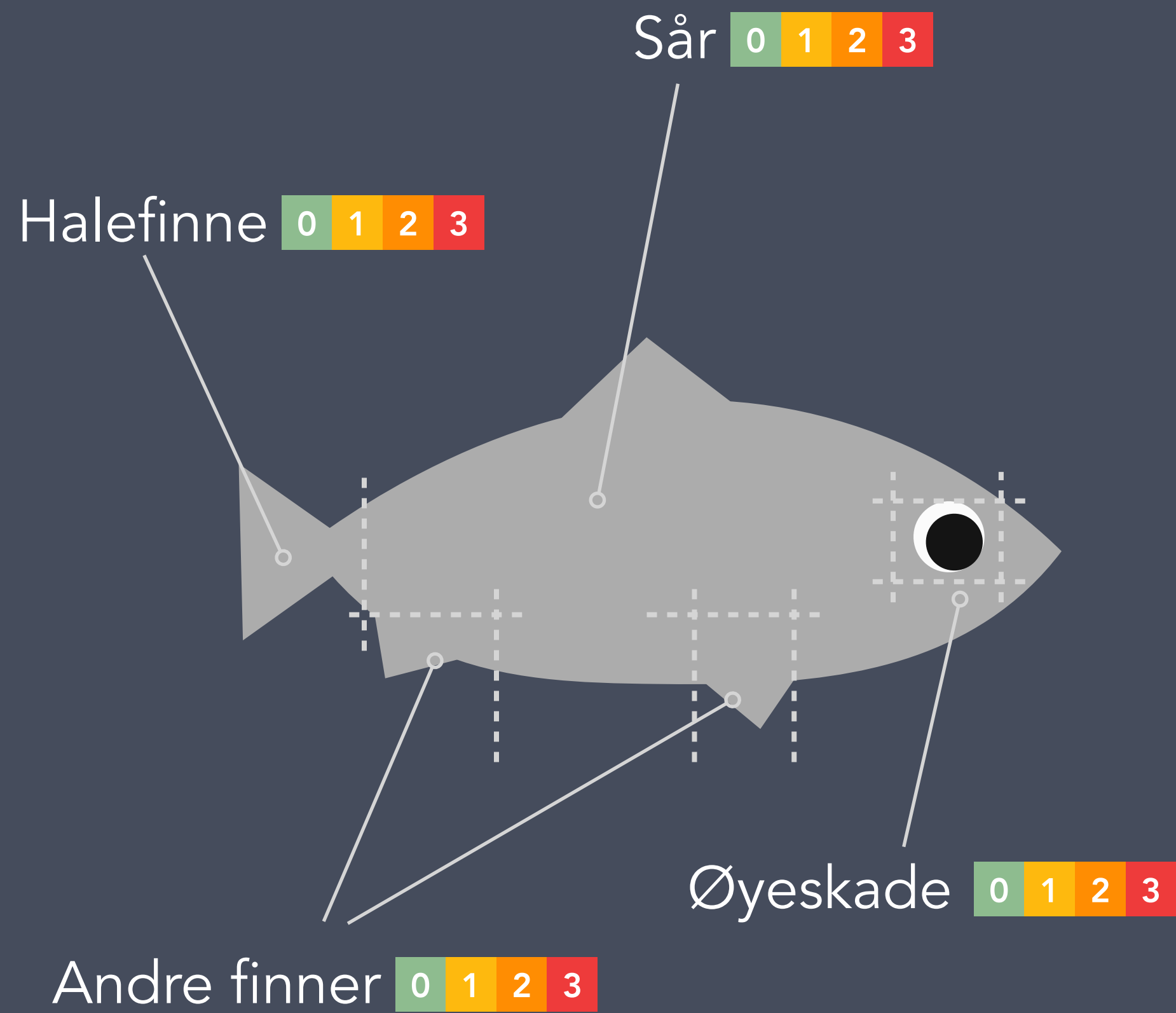


Velferdsscoring

OVI nivå

Individnivå

Populasjonsnivå



Velferdsscoring

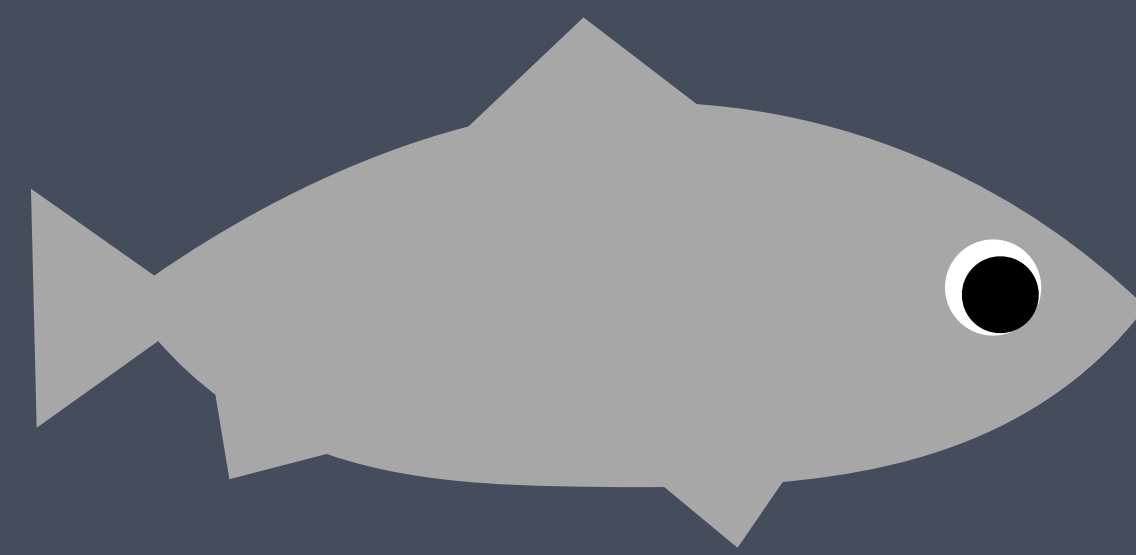
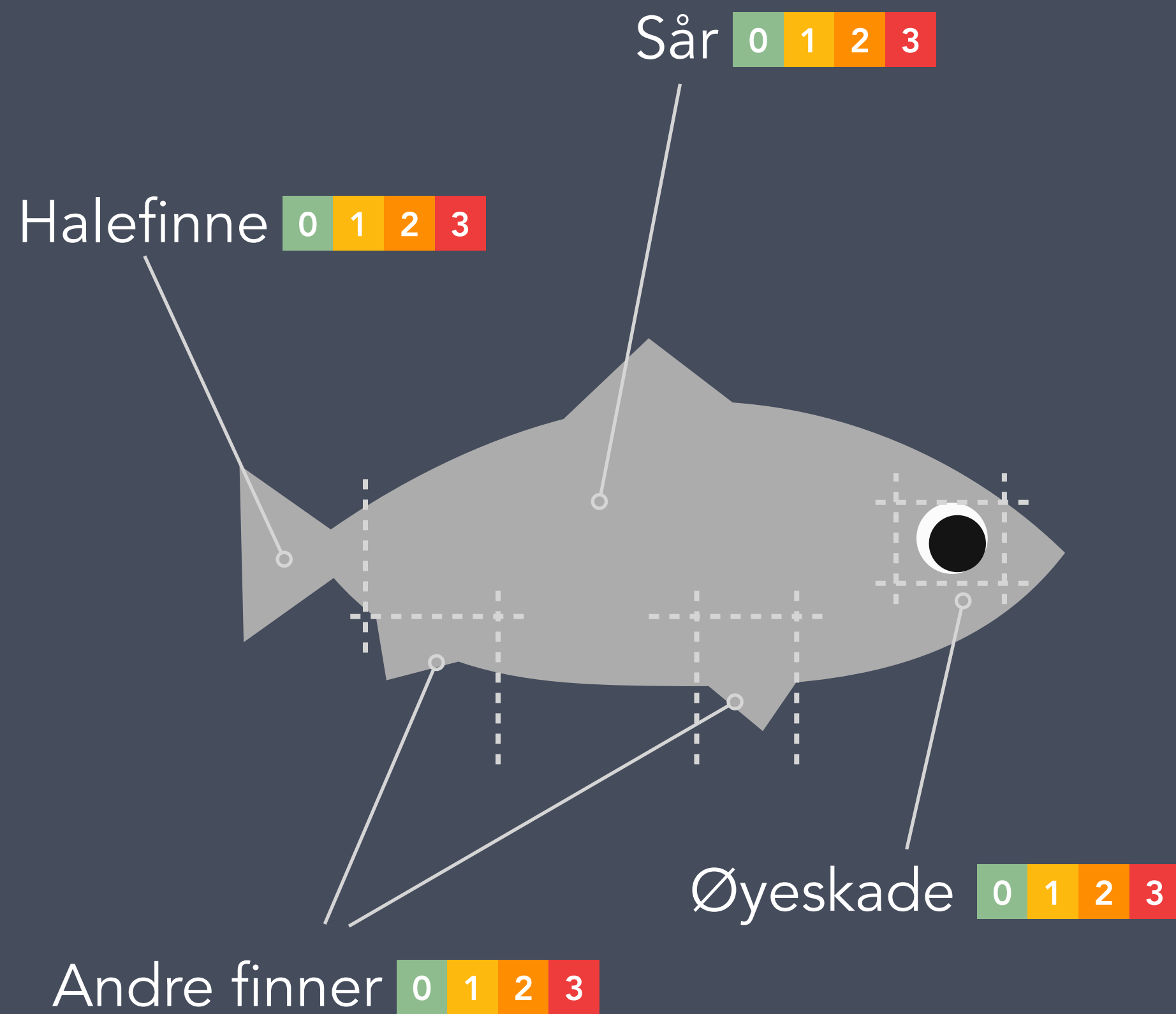
OVI nivå

Sum

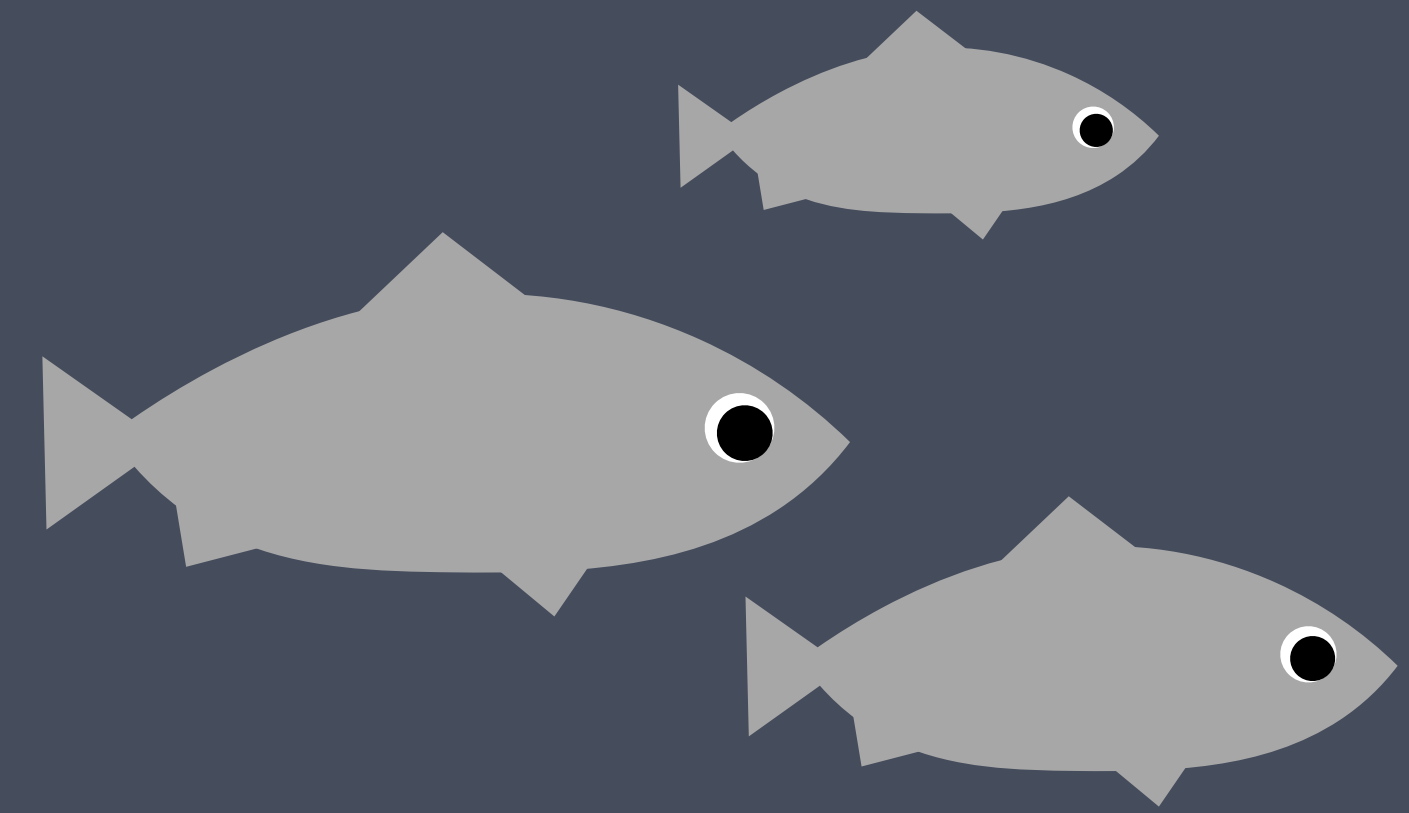
Individsnivå

Andel

Populasjonsnivå



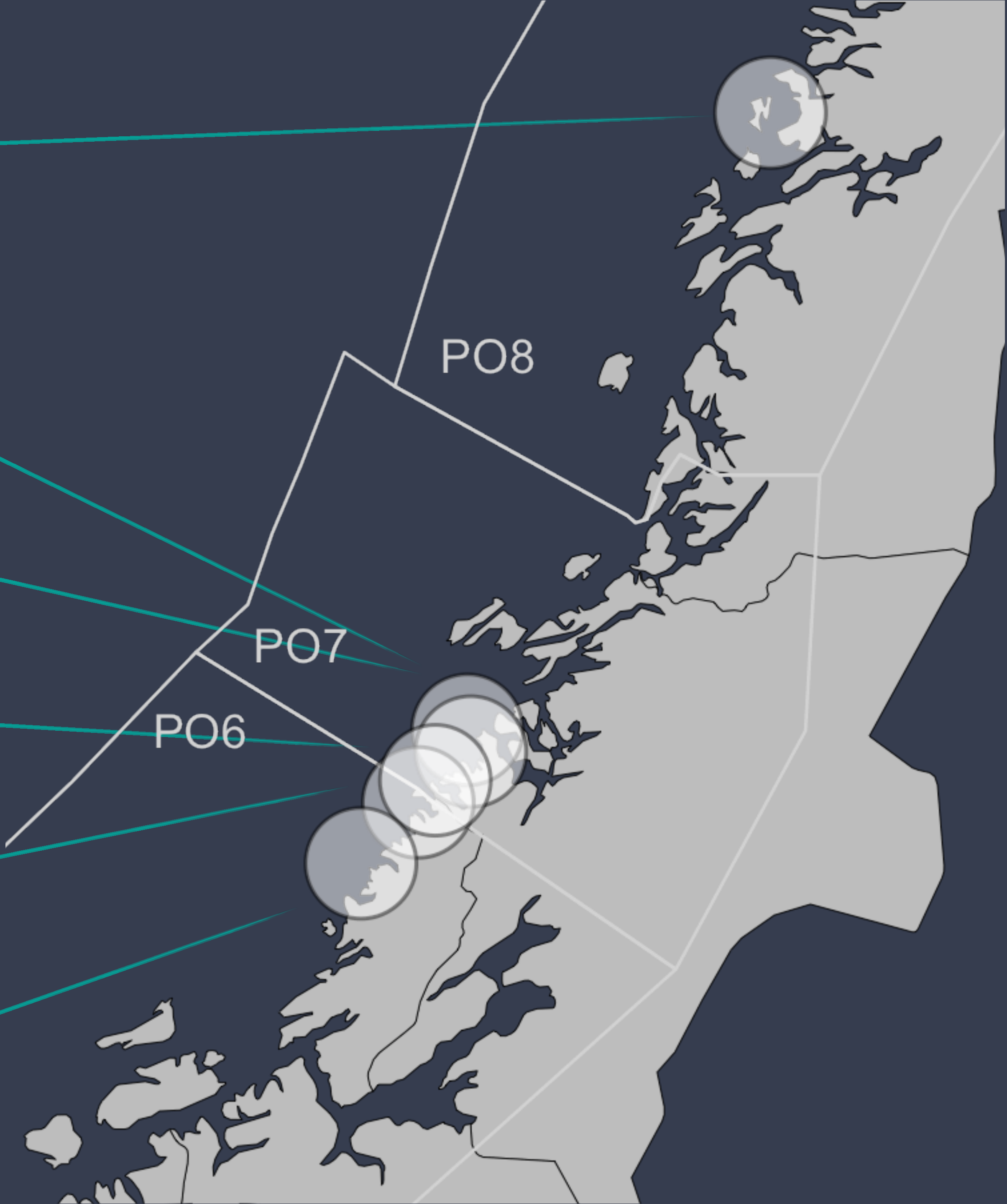
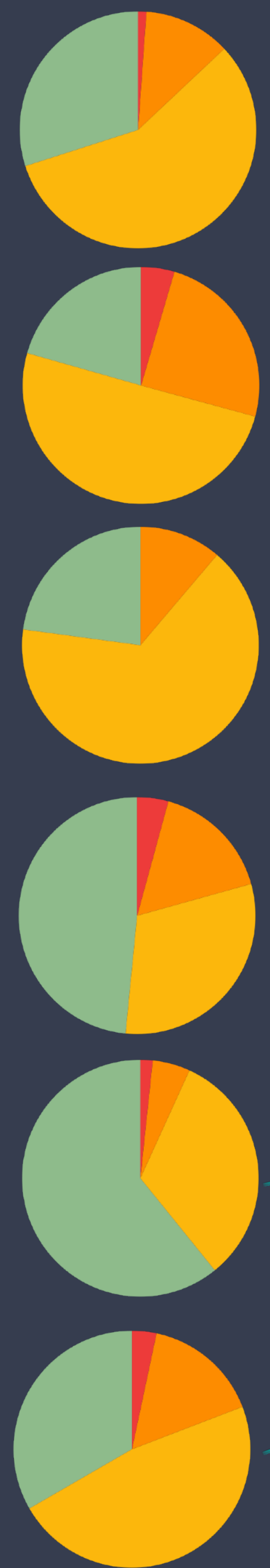
Velferdsstatus 0 1 2 3



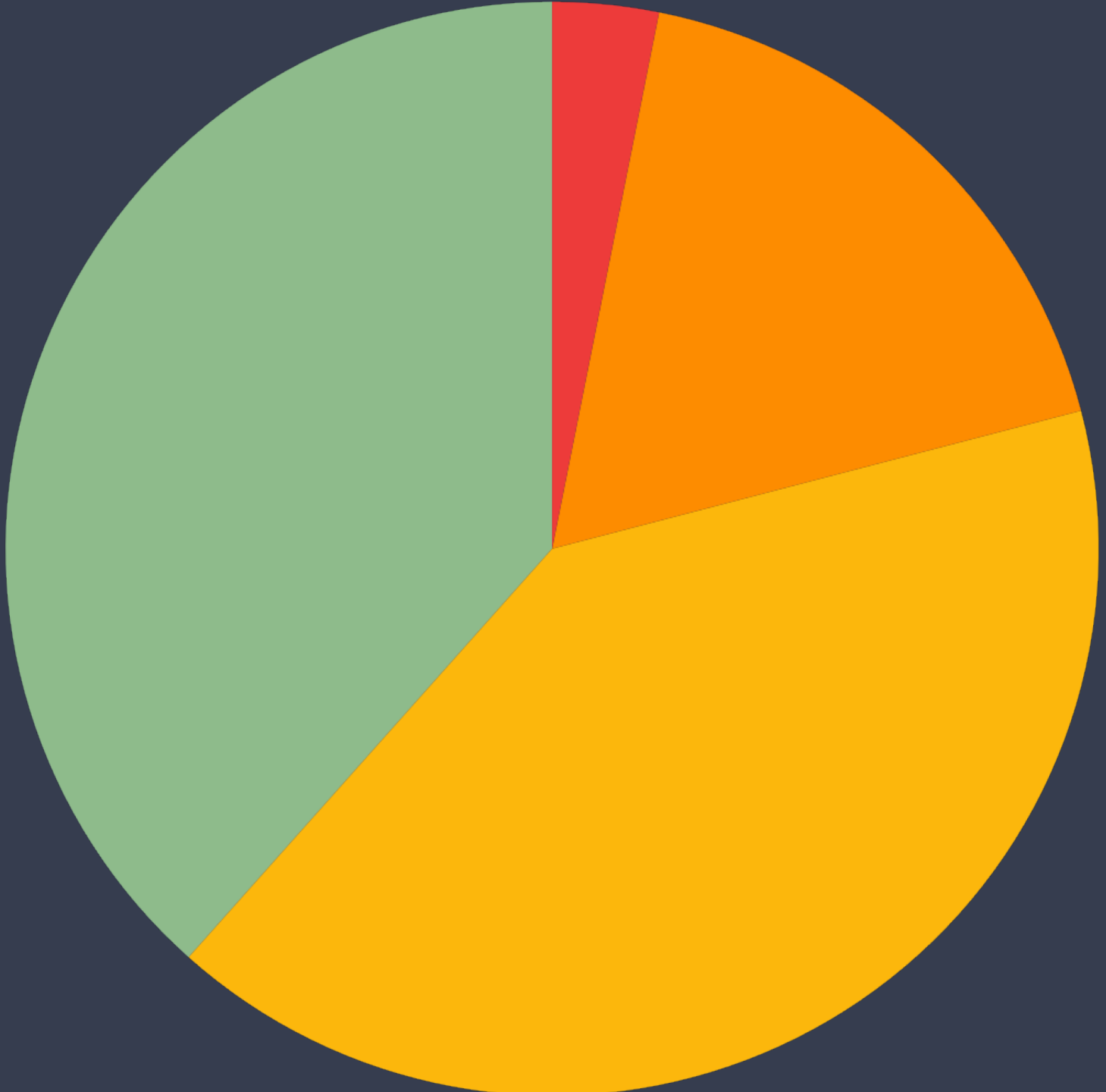
Fordeling av velferdsstatus

Velferd hos rognkjeks

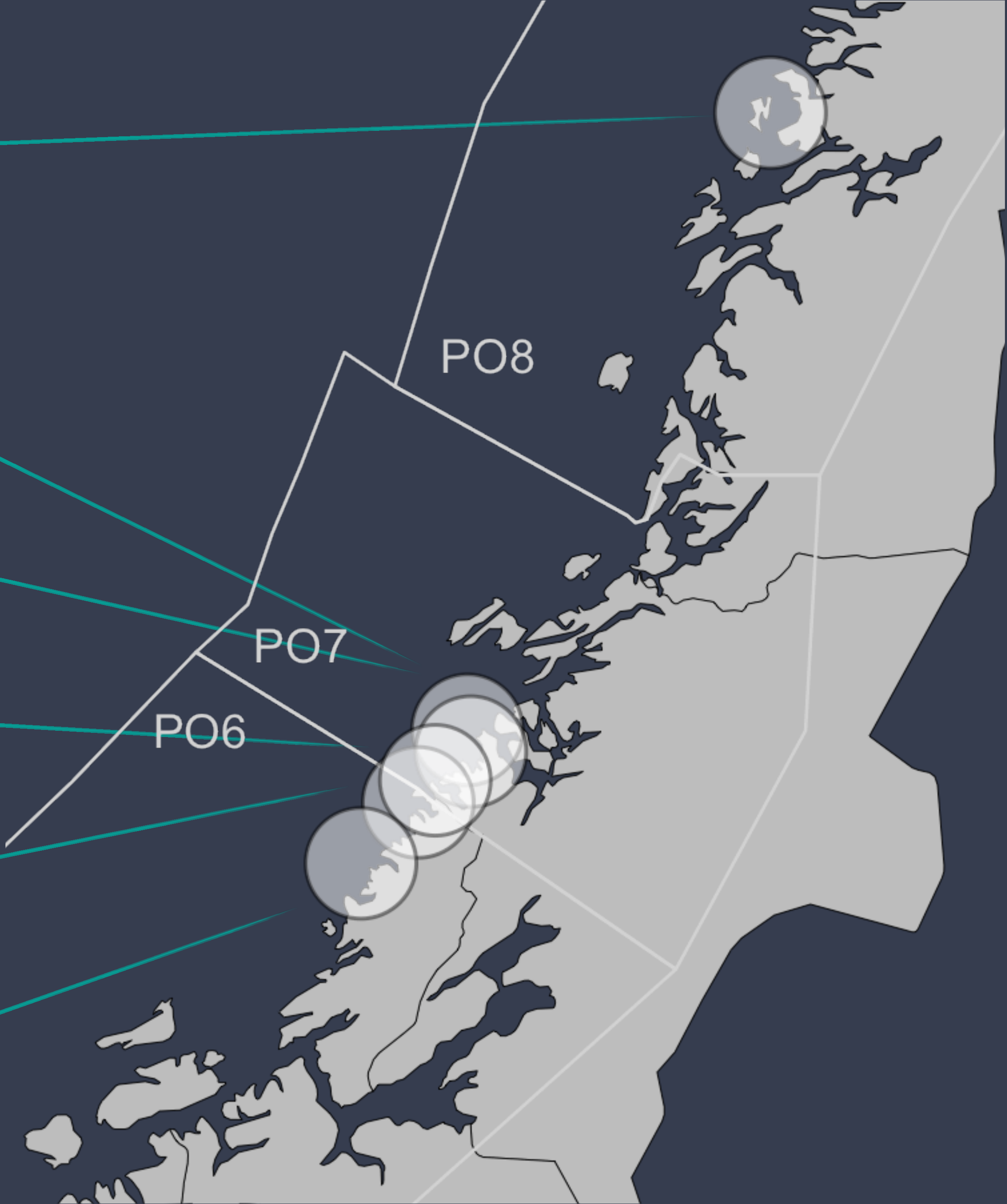
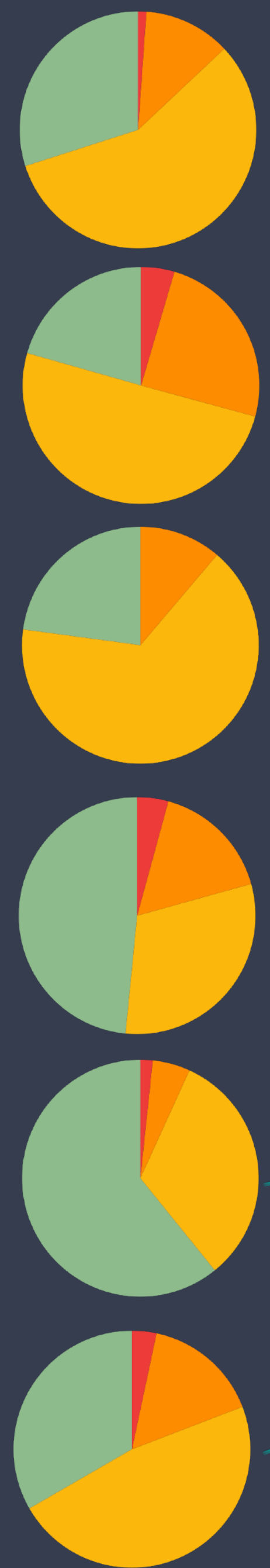
- God
- Noe redusert
- Tydlig redusert
- Alvorlig redusert



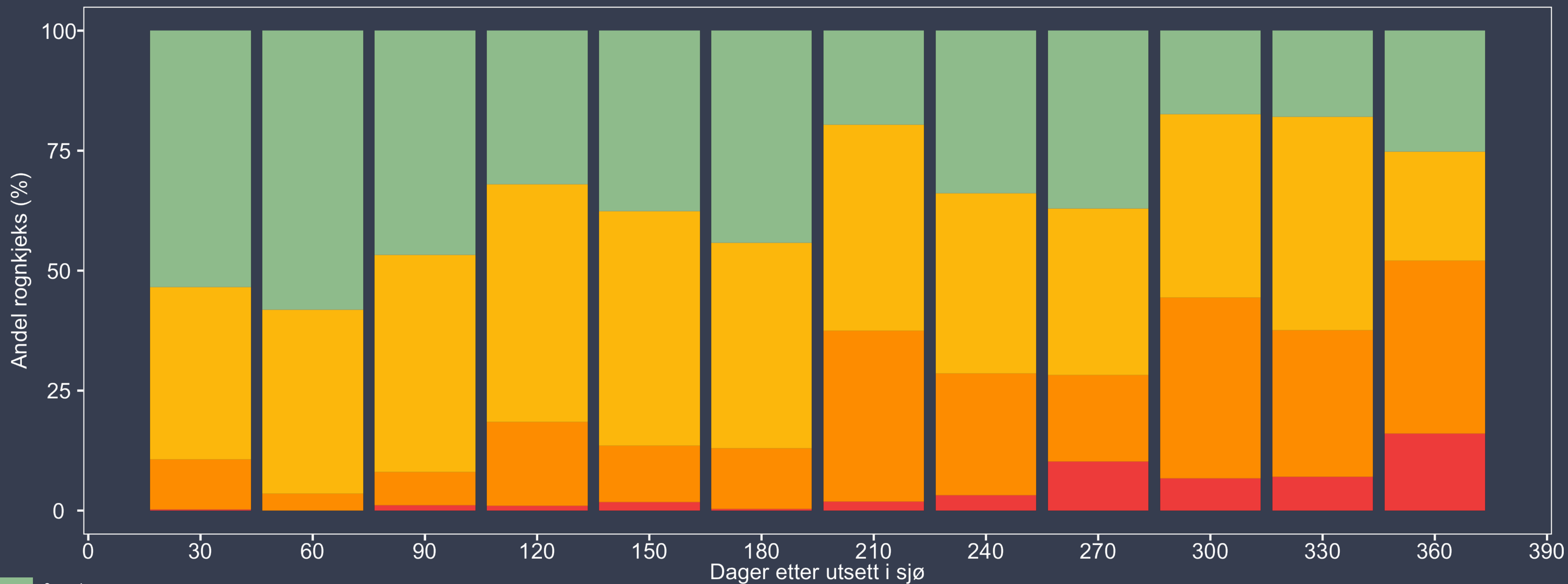
Velferd hos rognkjeks



- God
- Noe redusert
- Tydlig redusert
- Alvorlig redusert

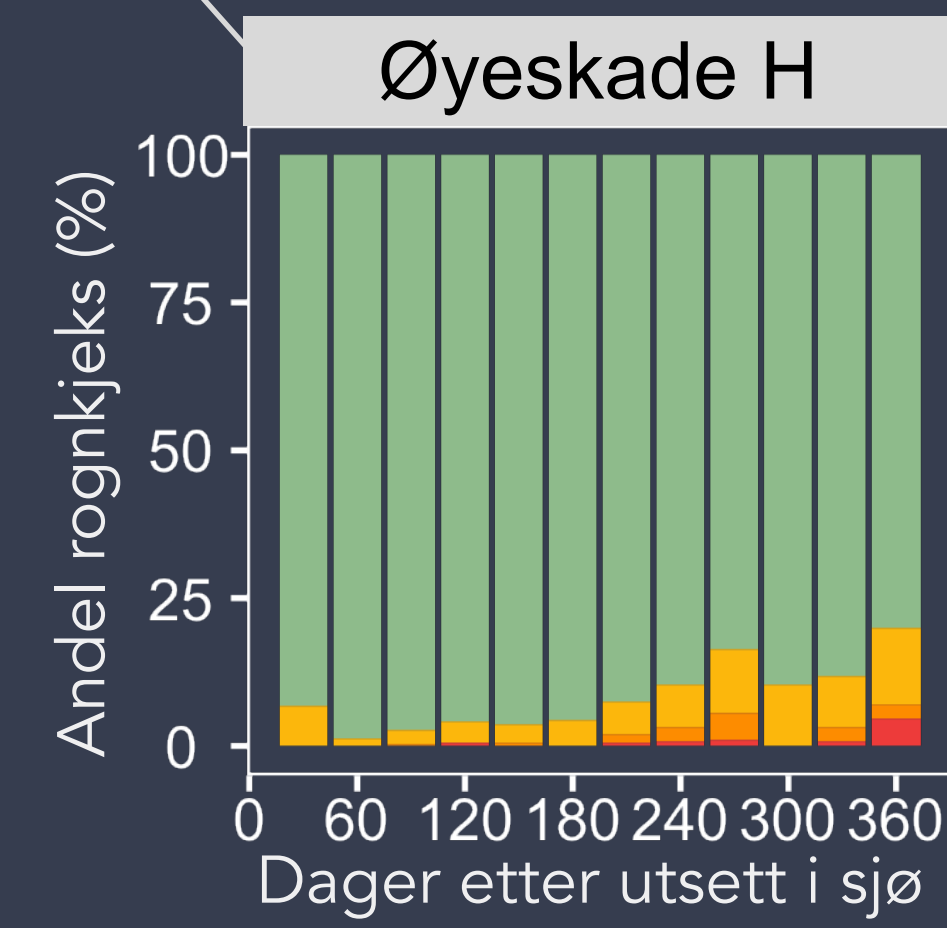
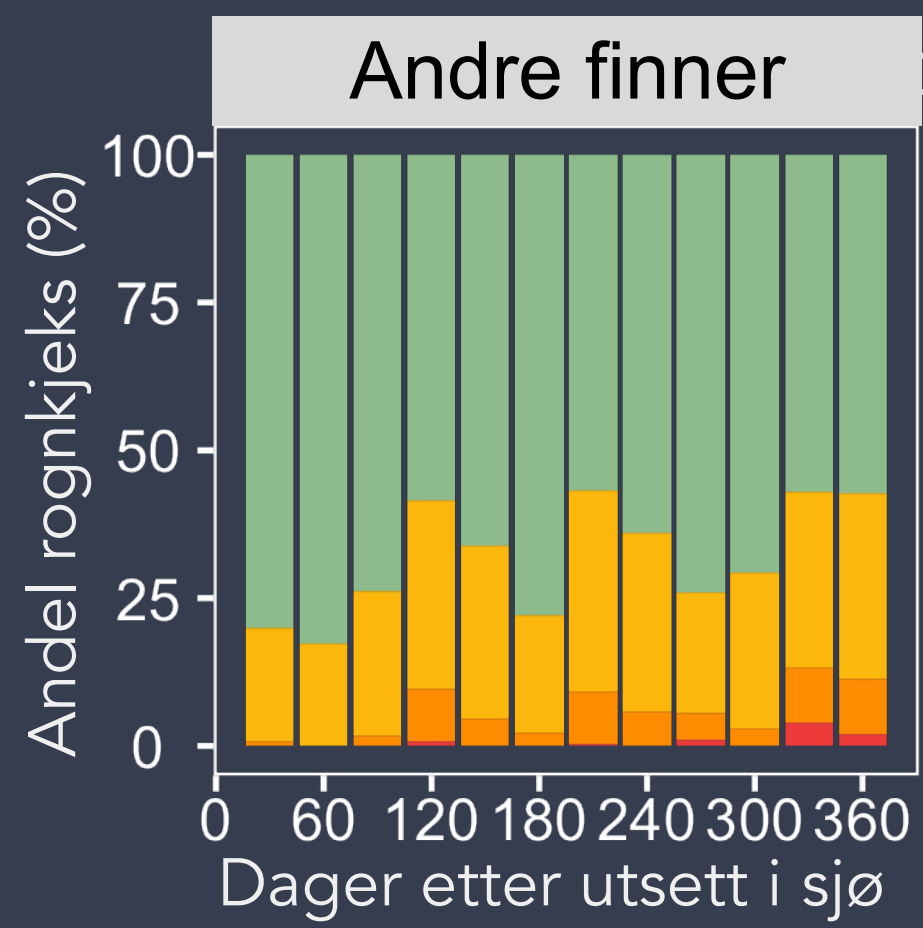
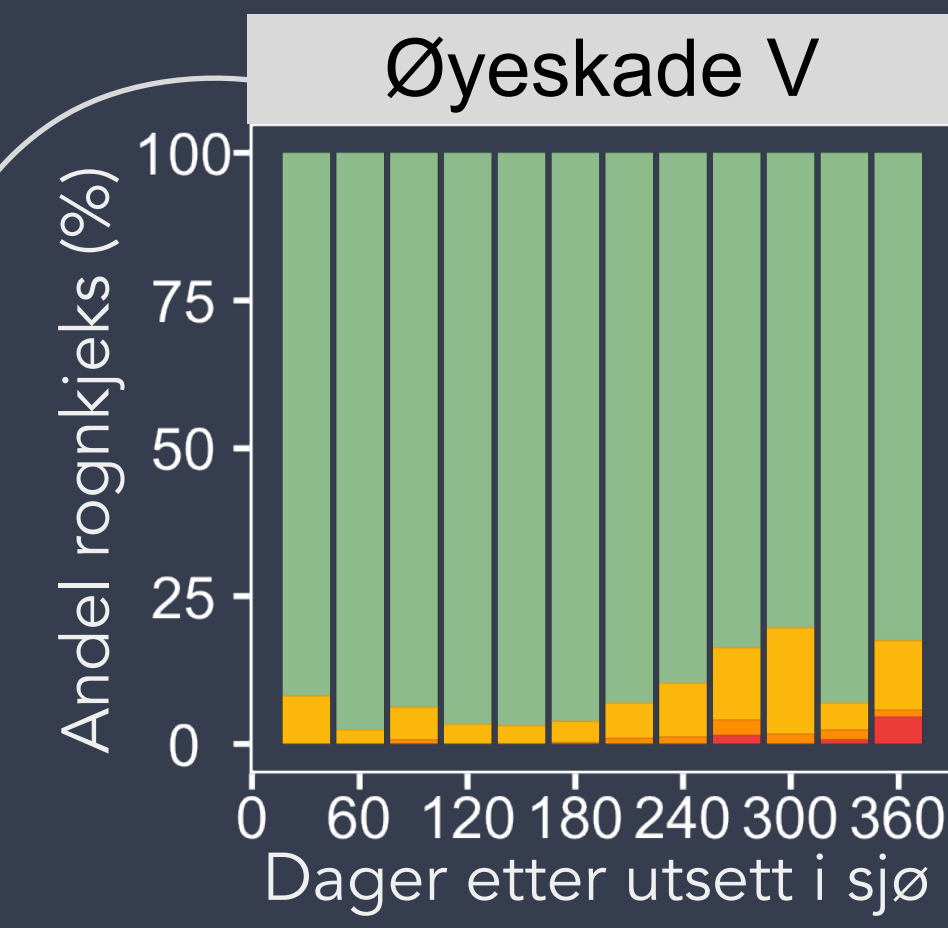
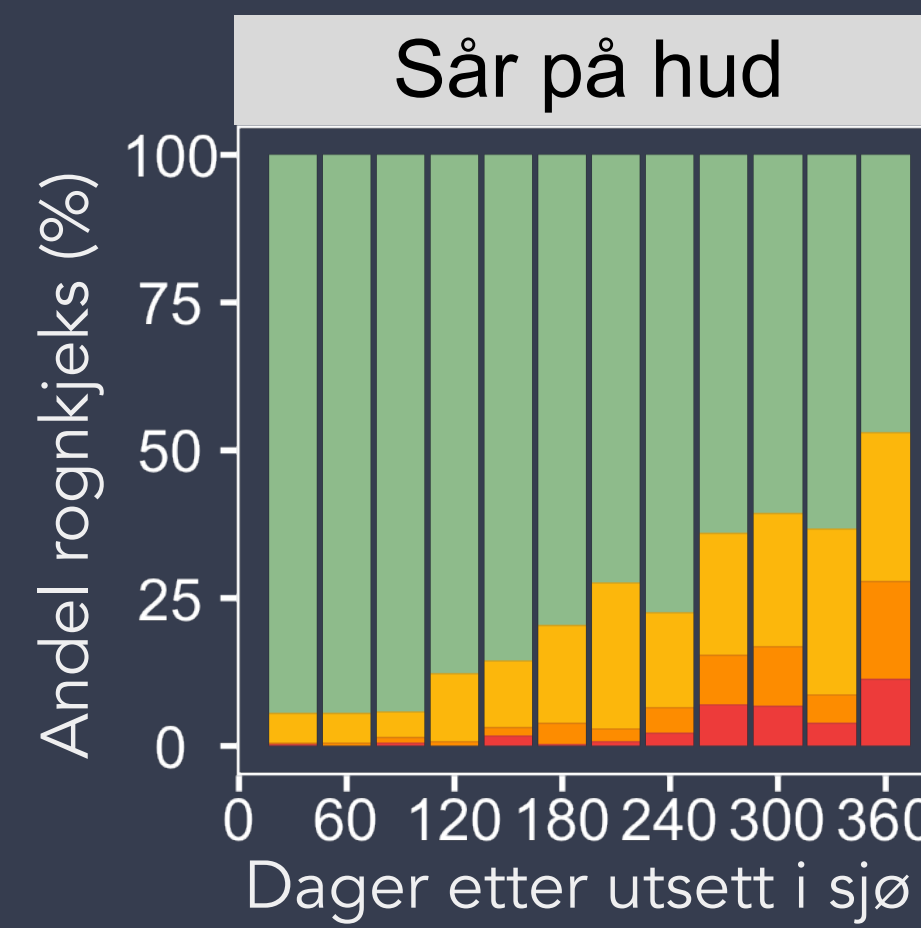
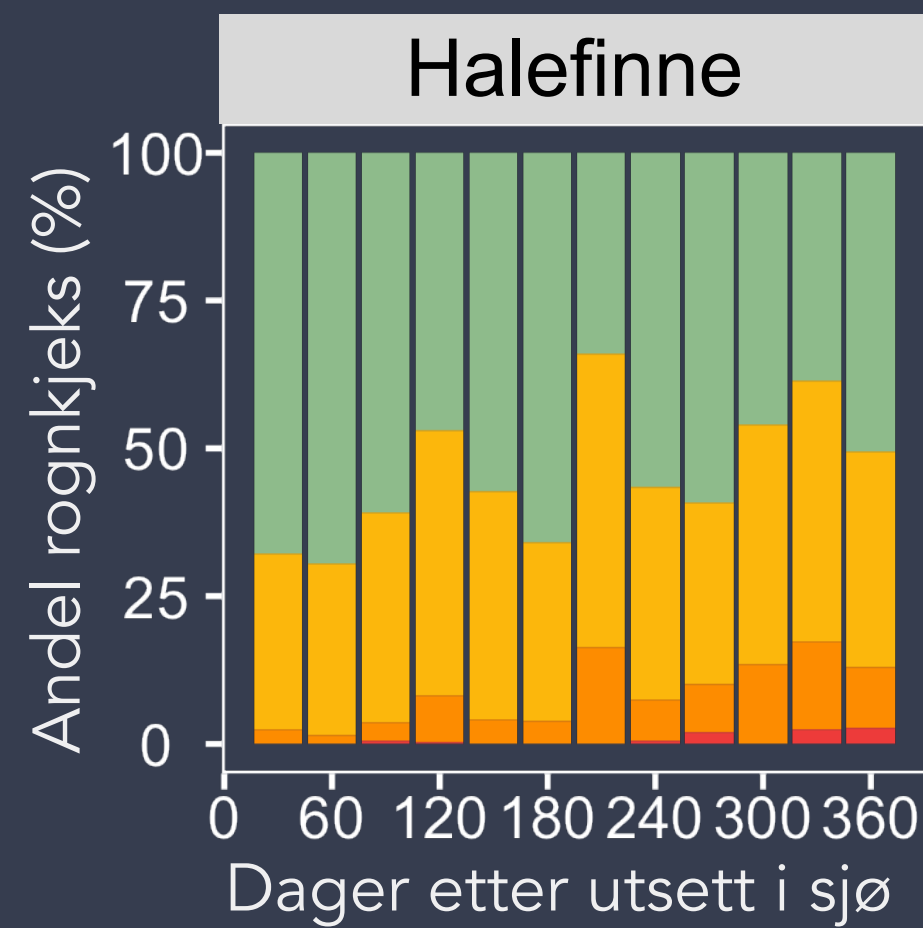


Velferd hos rognkjeks



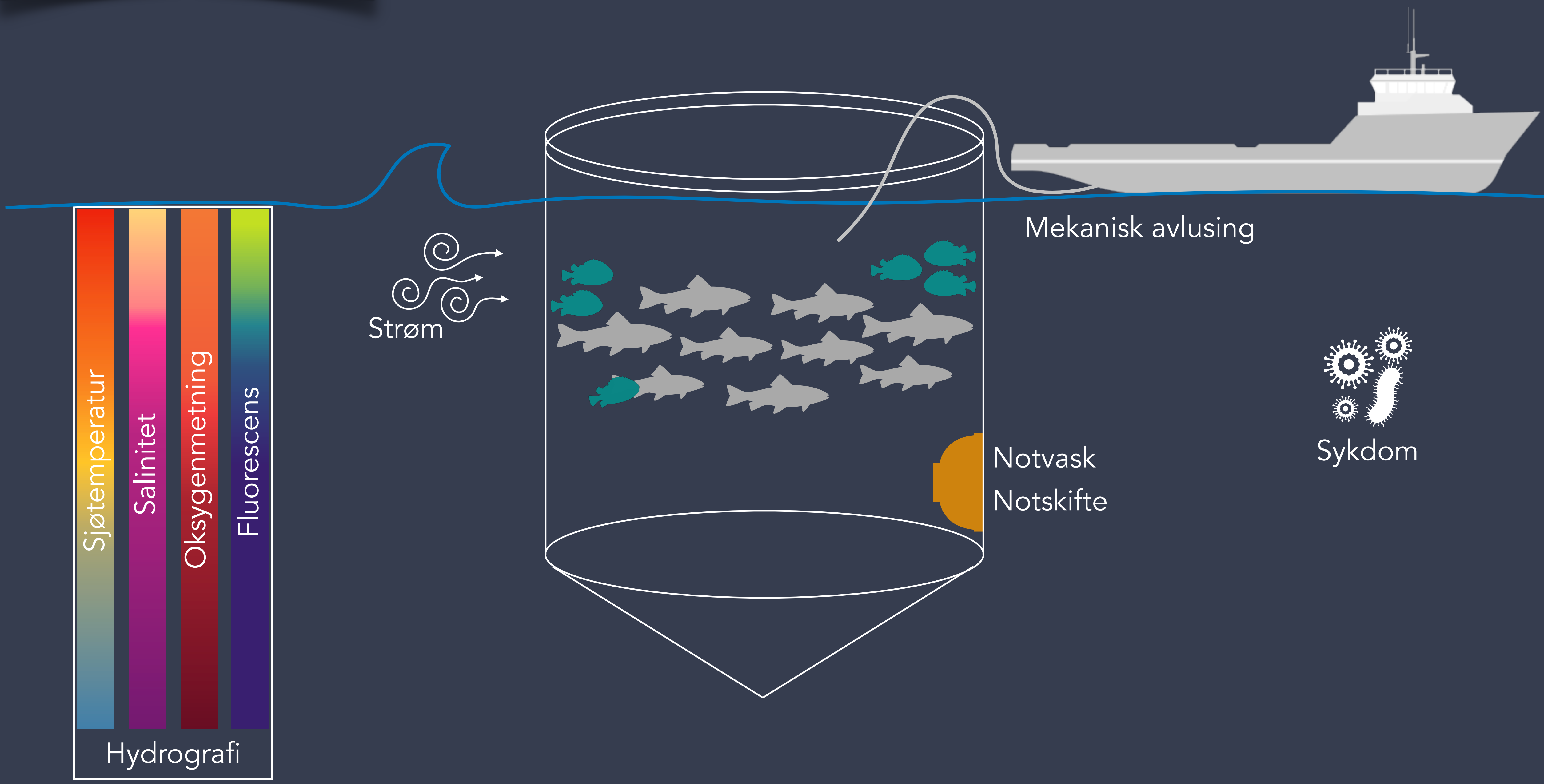
- God
- Noe redusert
- Tydelig redusert
- Alvorlig redusert

Velferd hos rognkjeks



- God
- Noe redusert
- Tydlig redusert
- Alvorlig redusert

Velferd hos rognkjeks



Sjøtemperatur

Salinitet

Oksygenmetning

Fluorescens

Hydrografi

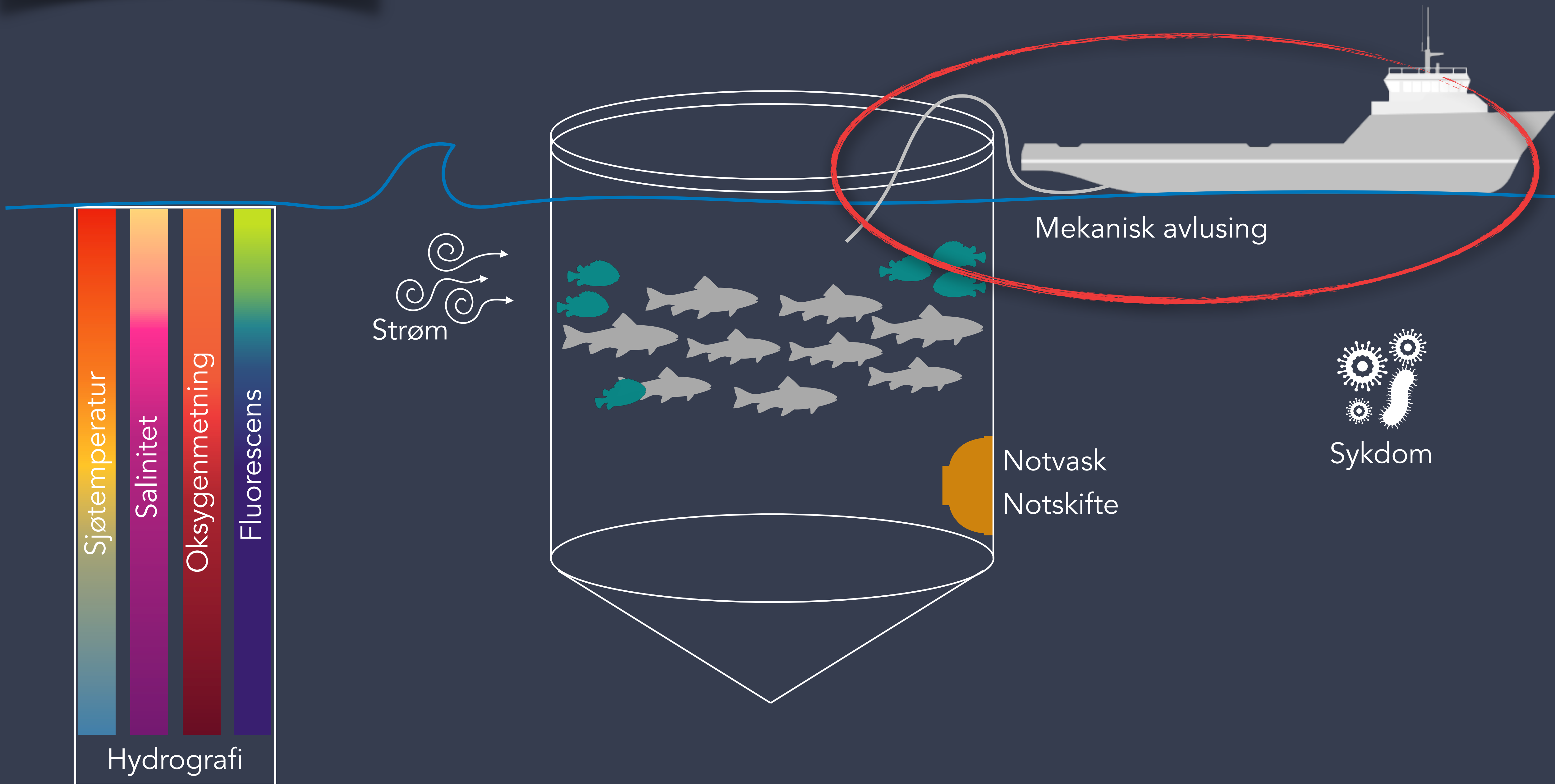
Strøm

Mekanisk avlusing

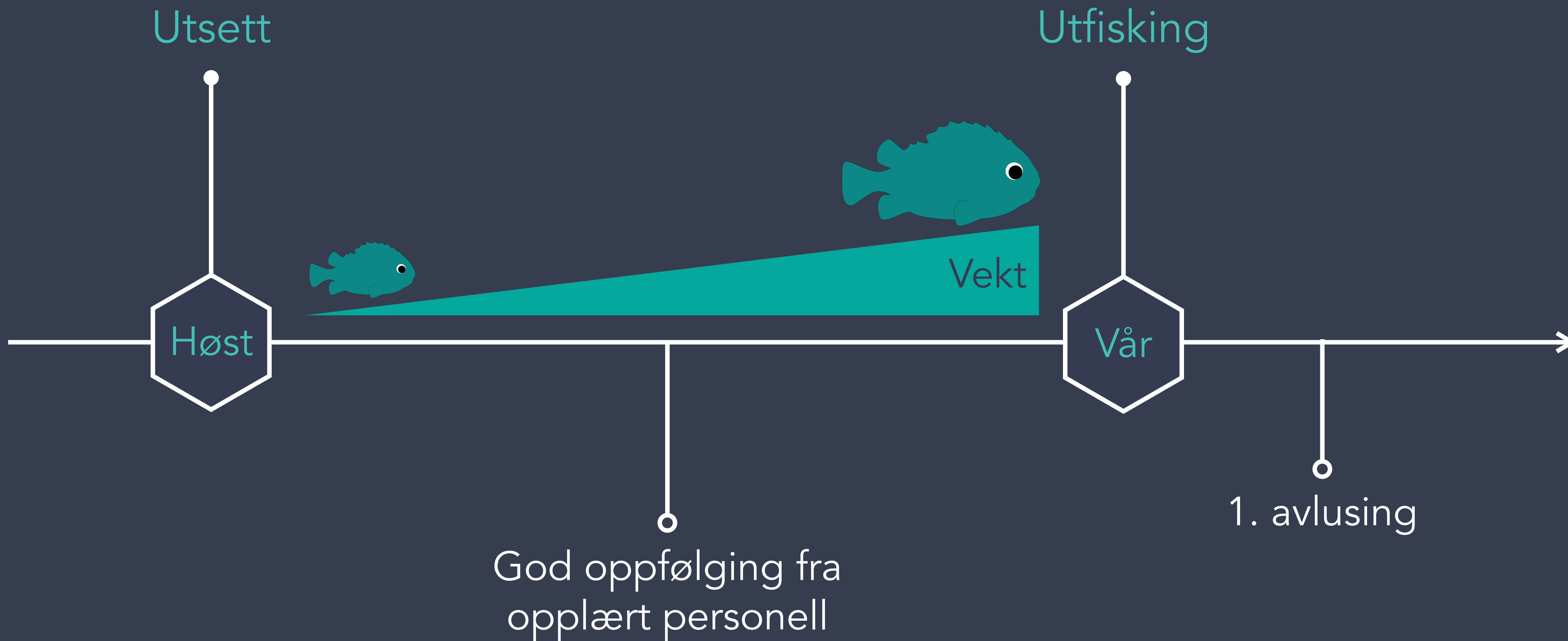
Notvask
Notskifte

Sykdom

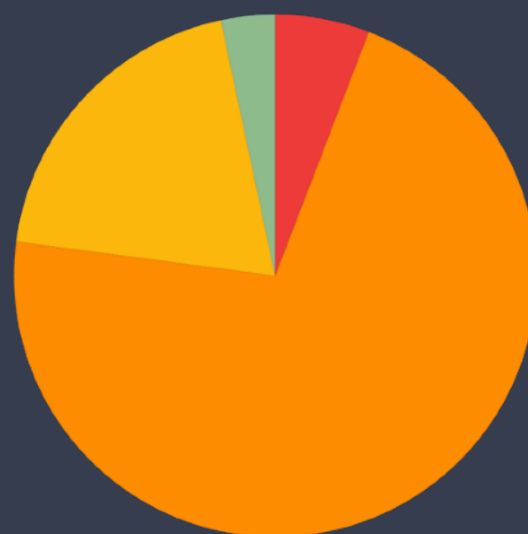
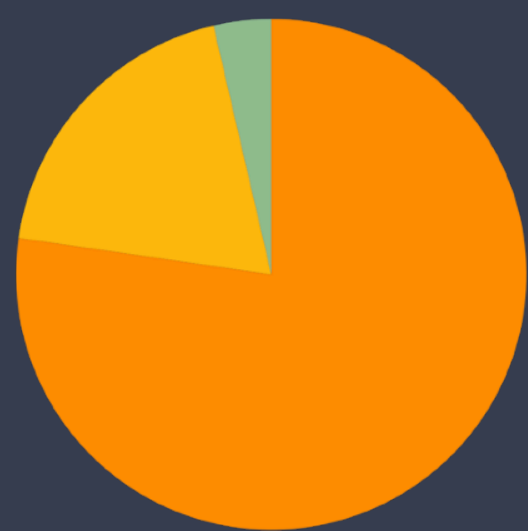
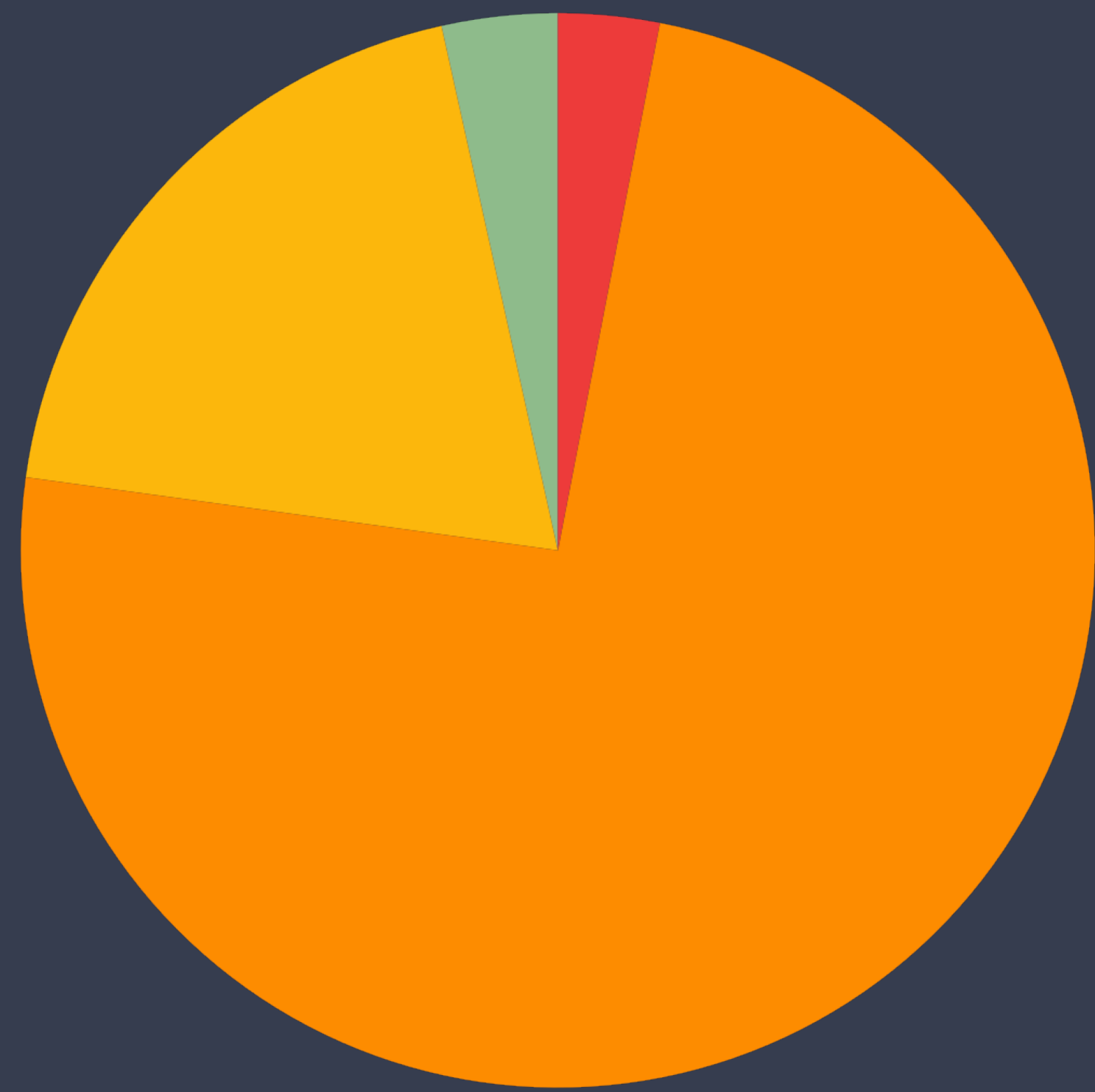
Velferd hos rognkjeks



Velferd hos rognkjeks



Velferd hos berggylt

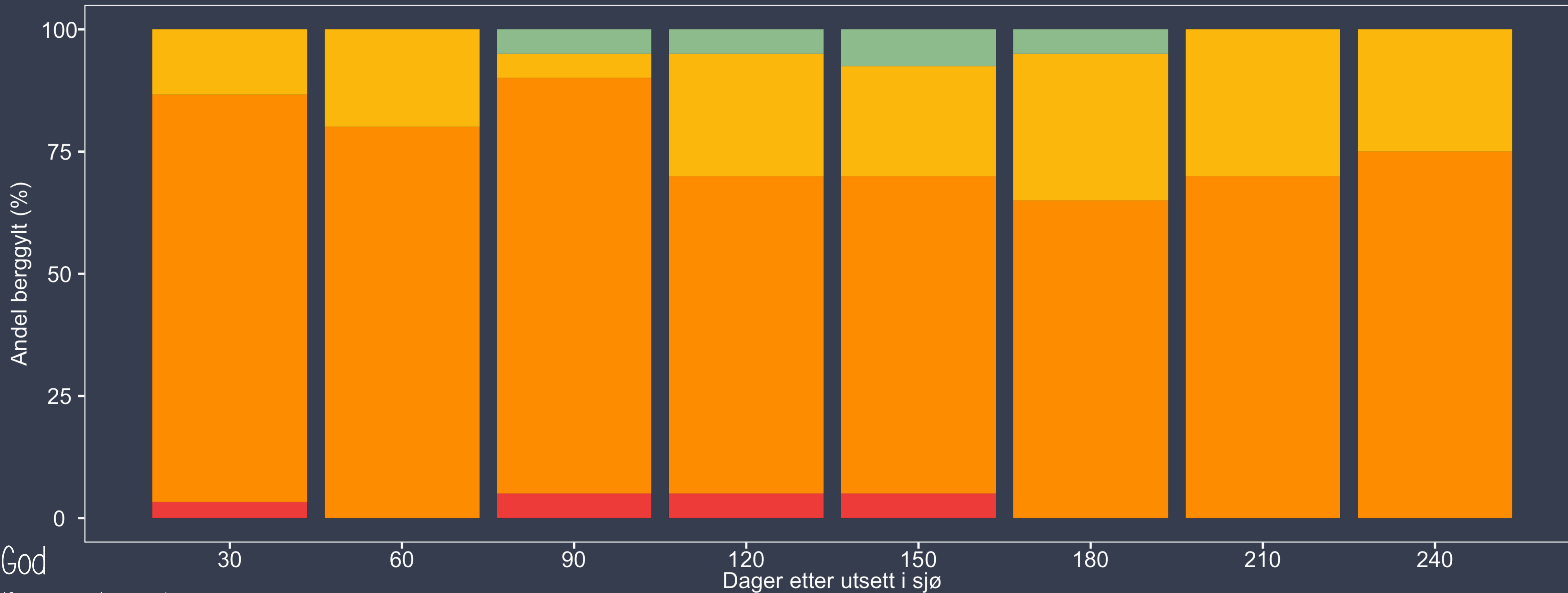


- God
- Noe redusert
- Tydelig redusert
- Alvorlig redusert

Velferd hos berggylt

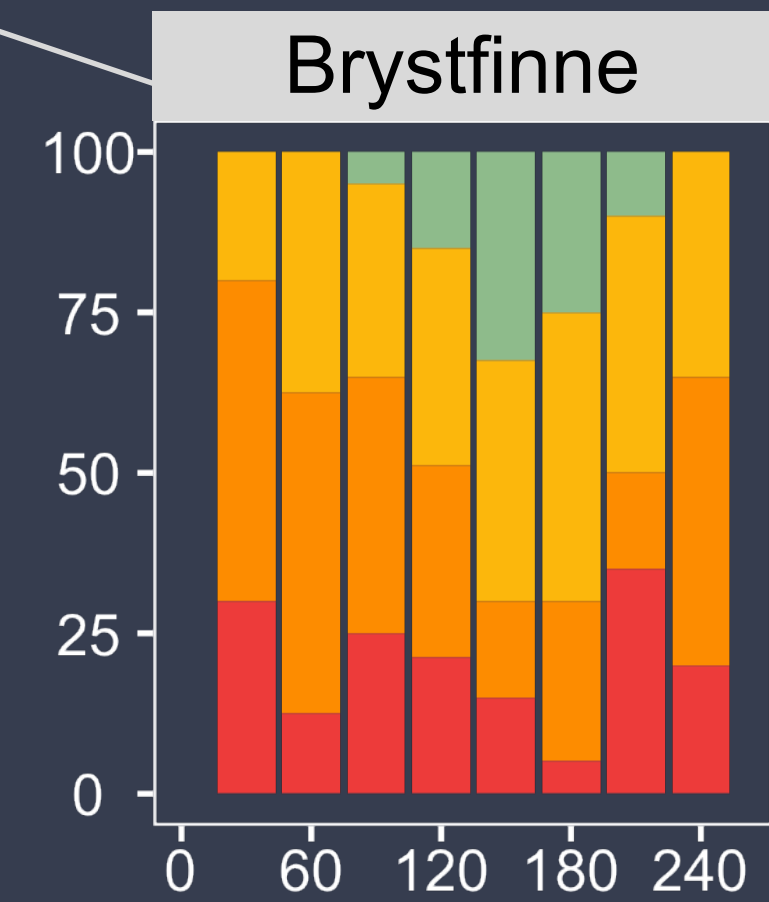
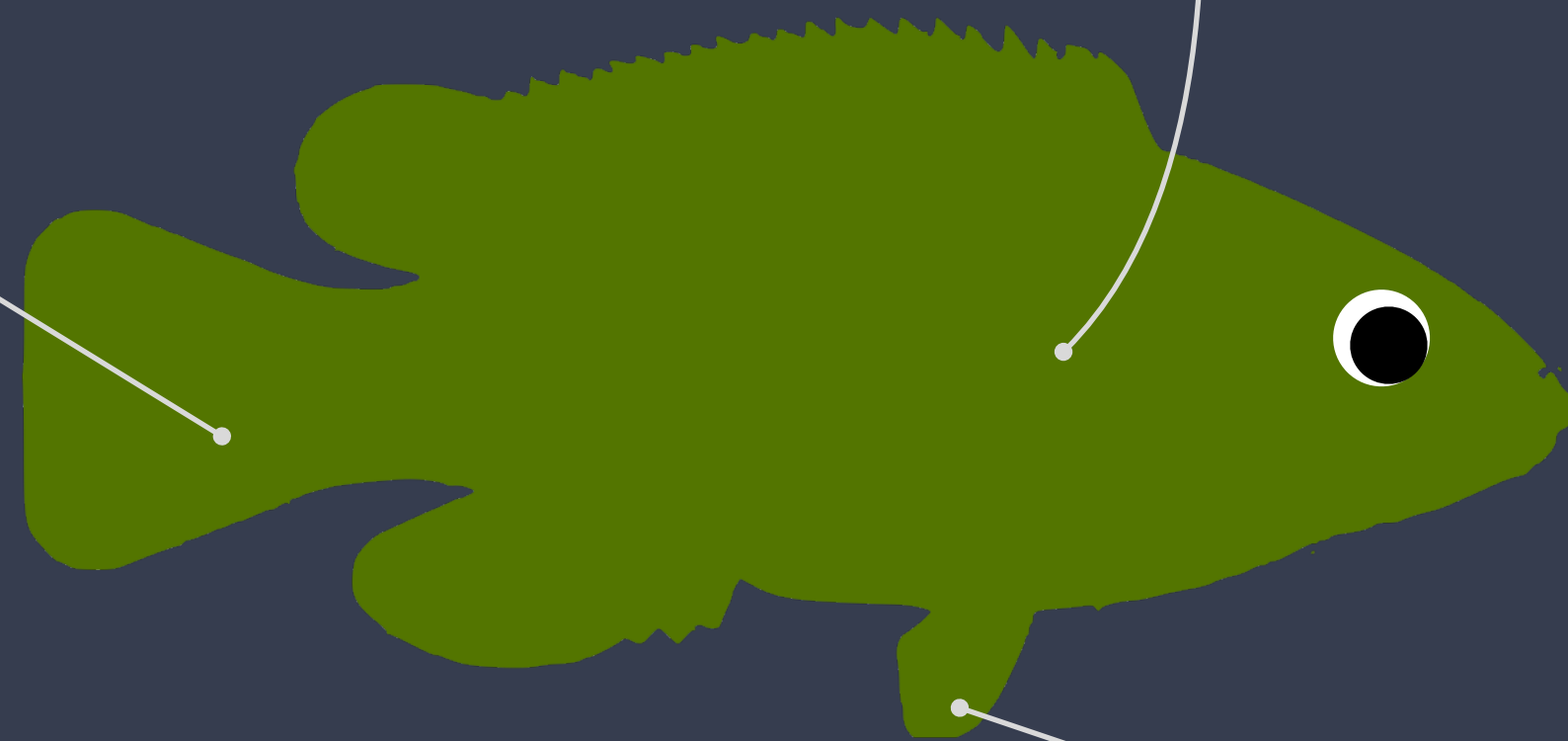
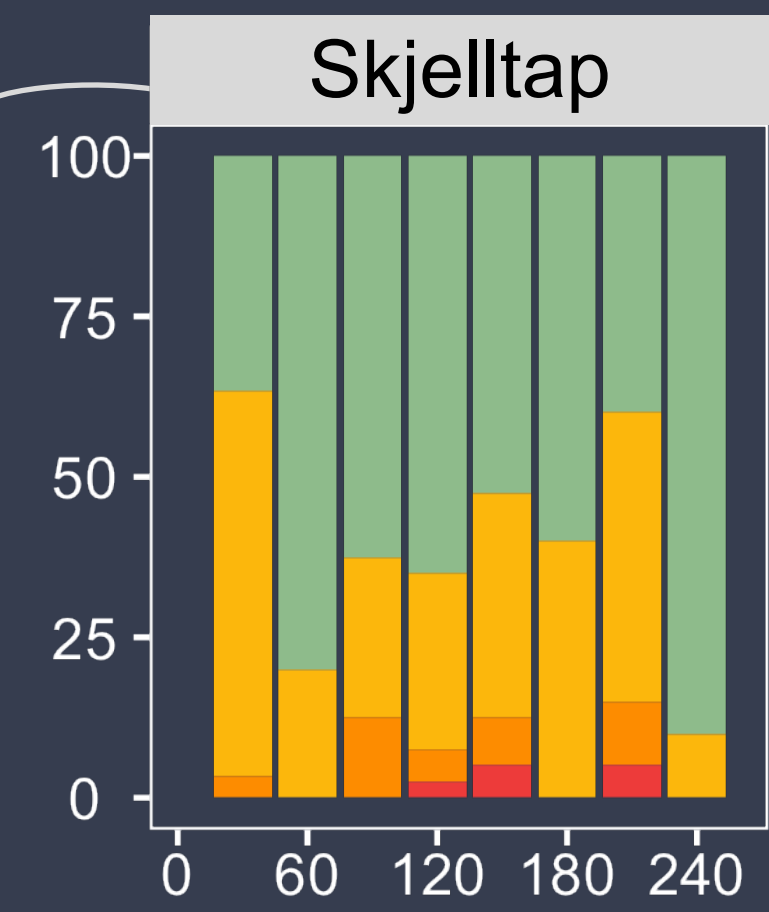
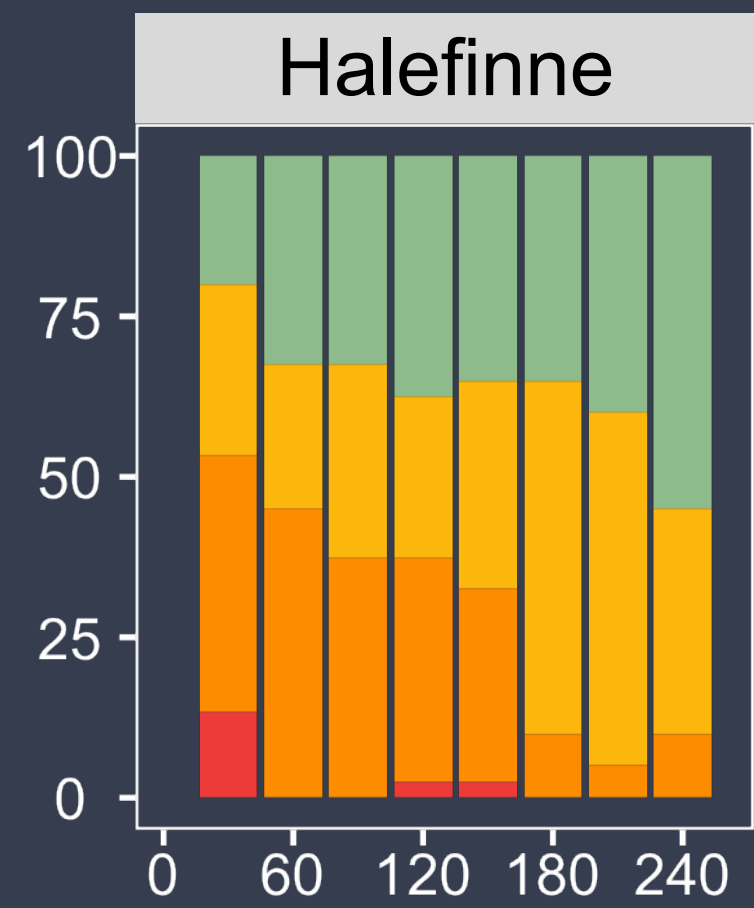
Juni 2021

Januar 2022



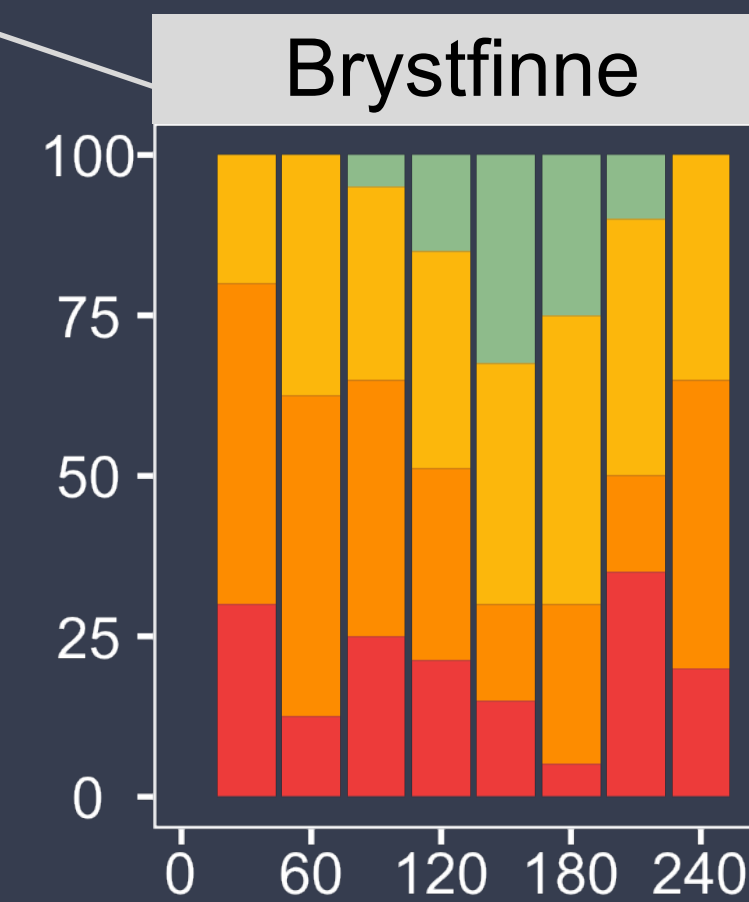
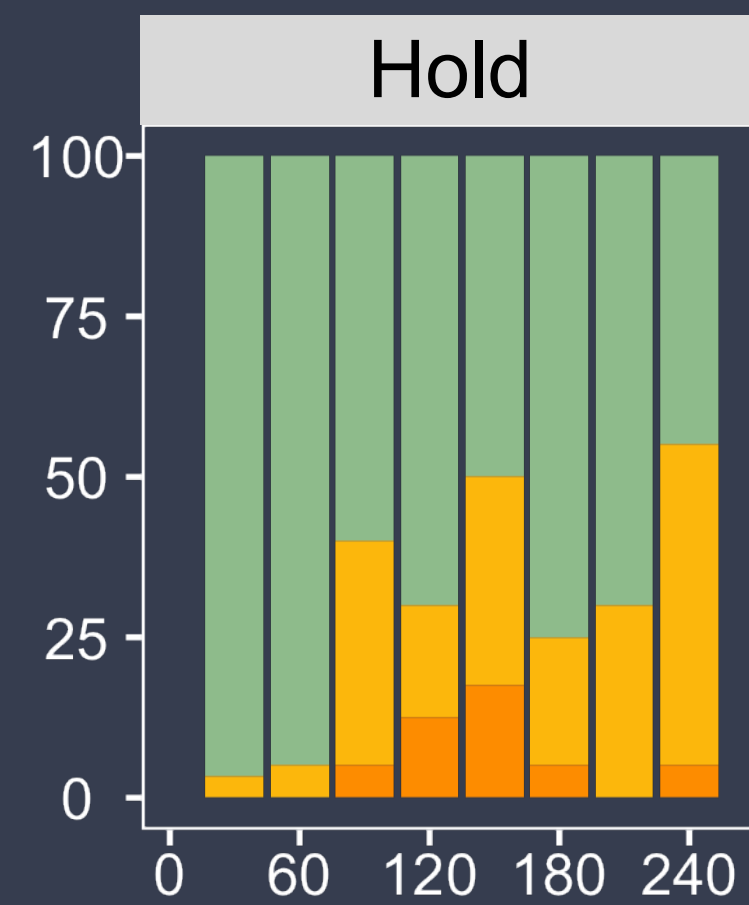
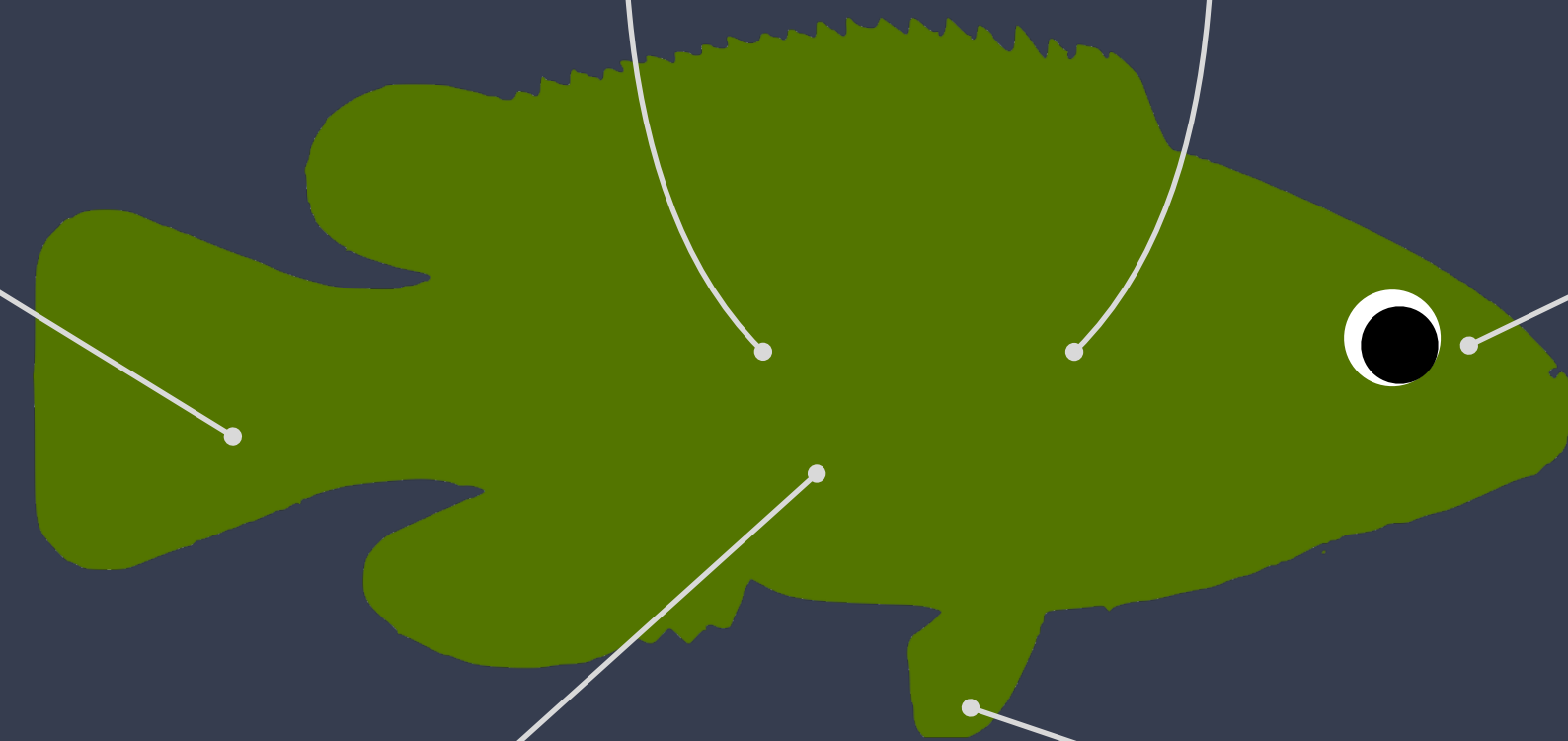
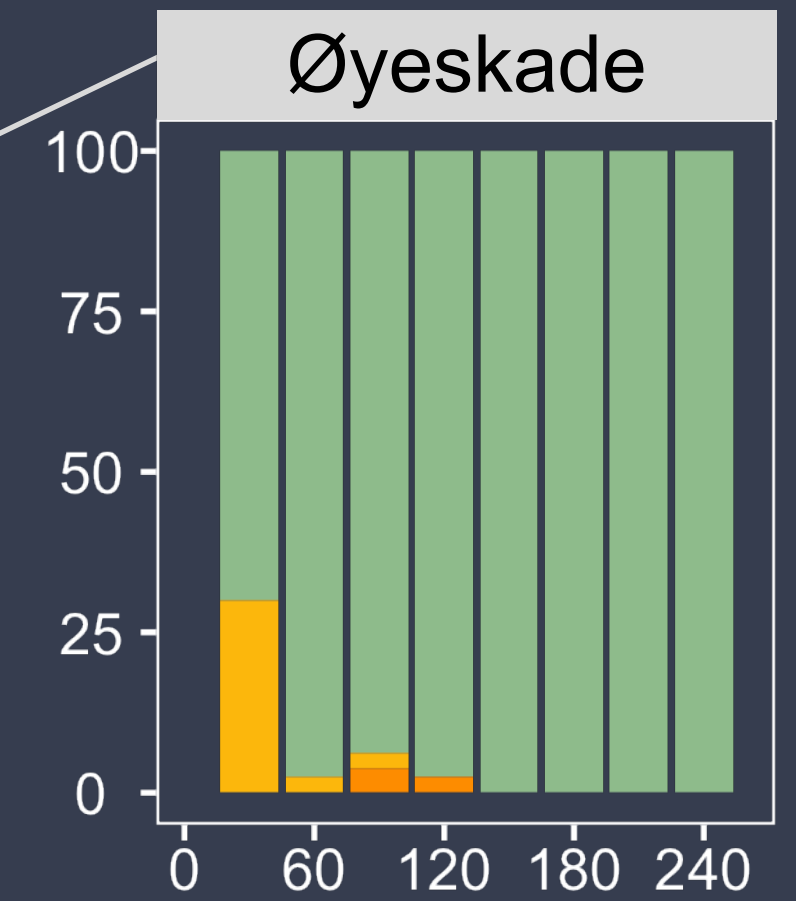
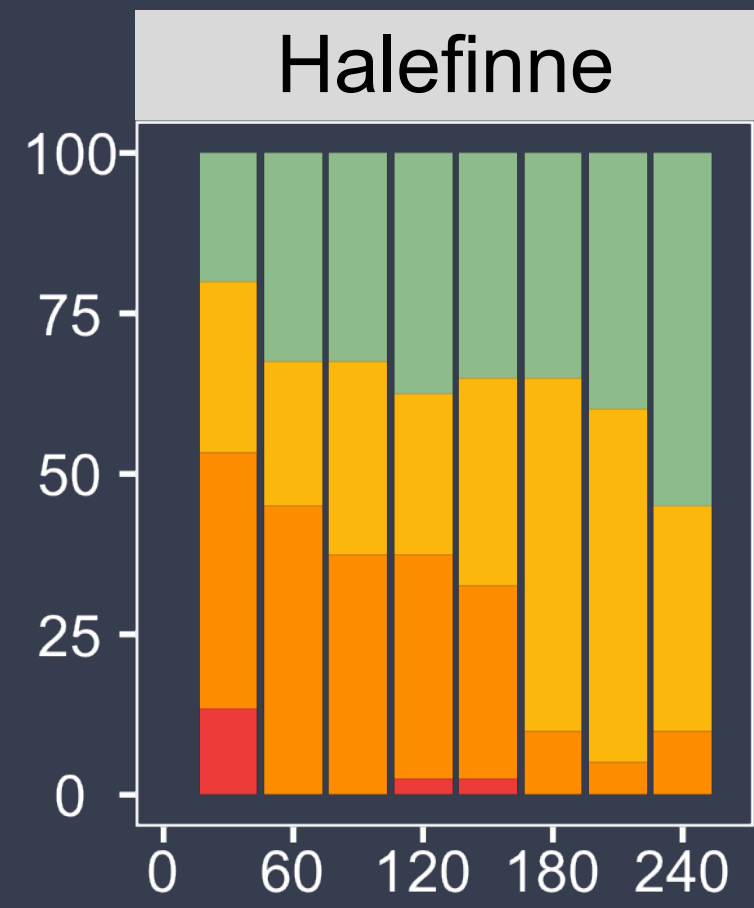
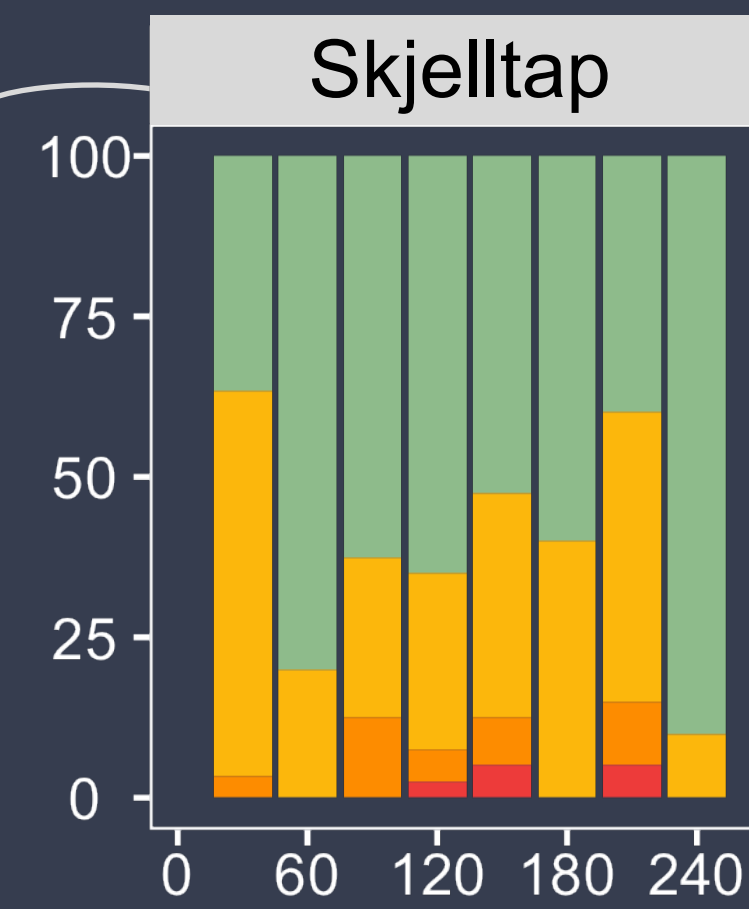
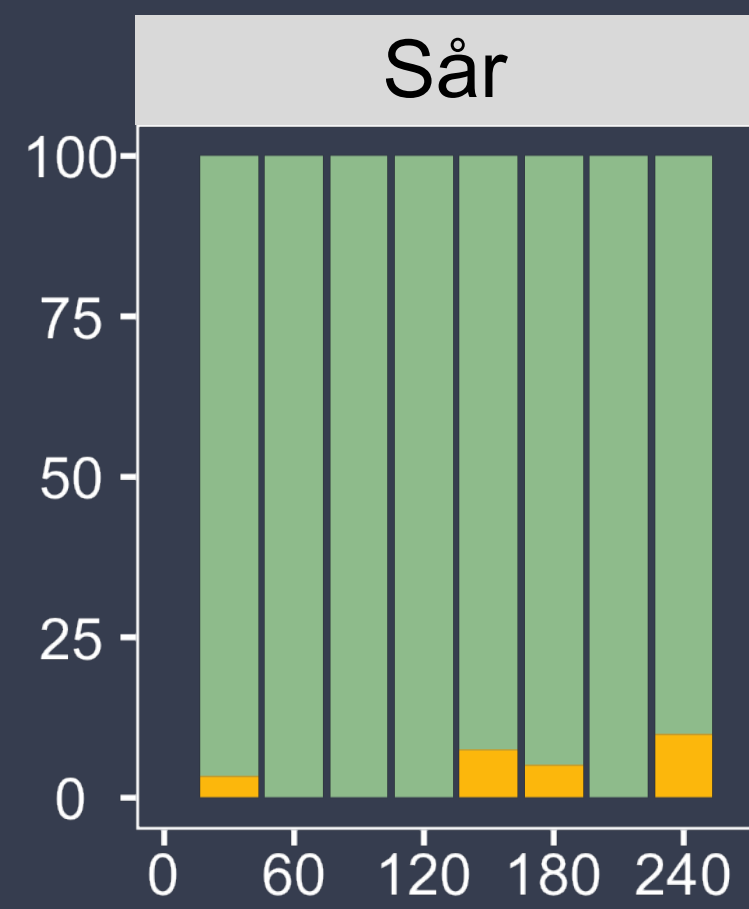
- God
- Noe redusert
- Tydelig redusert
- Alvorlig redusert

Velferd hos berggylt



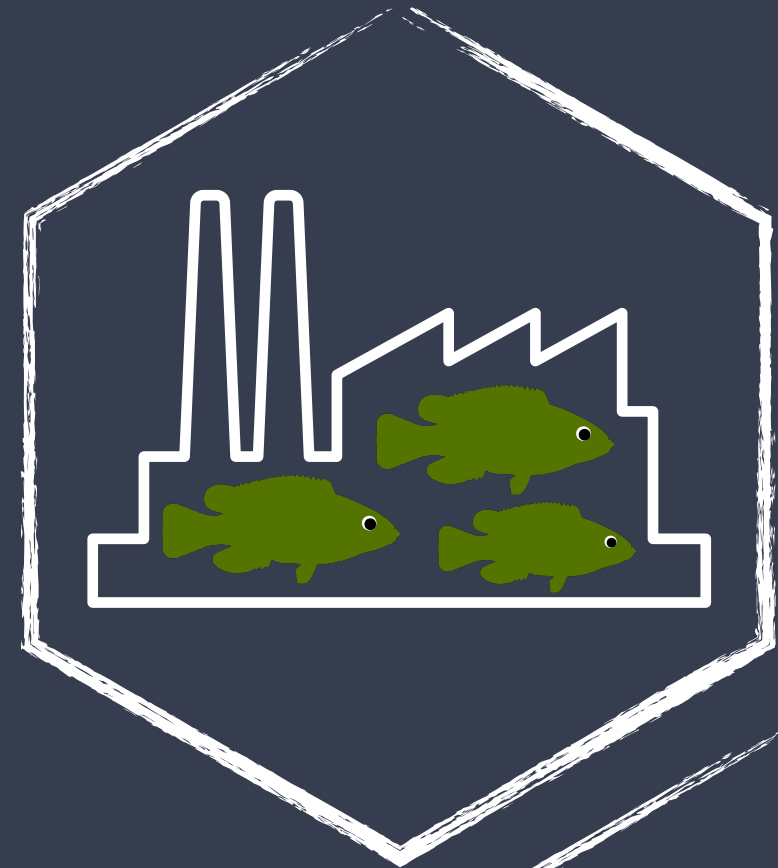
- God
- Noe redusert
- Tydelig redusert
- Alvorlig redusert

Velferd hos berggylt

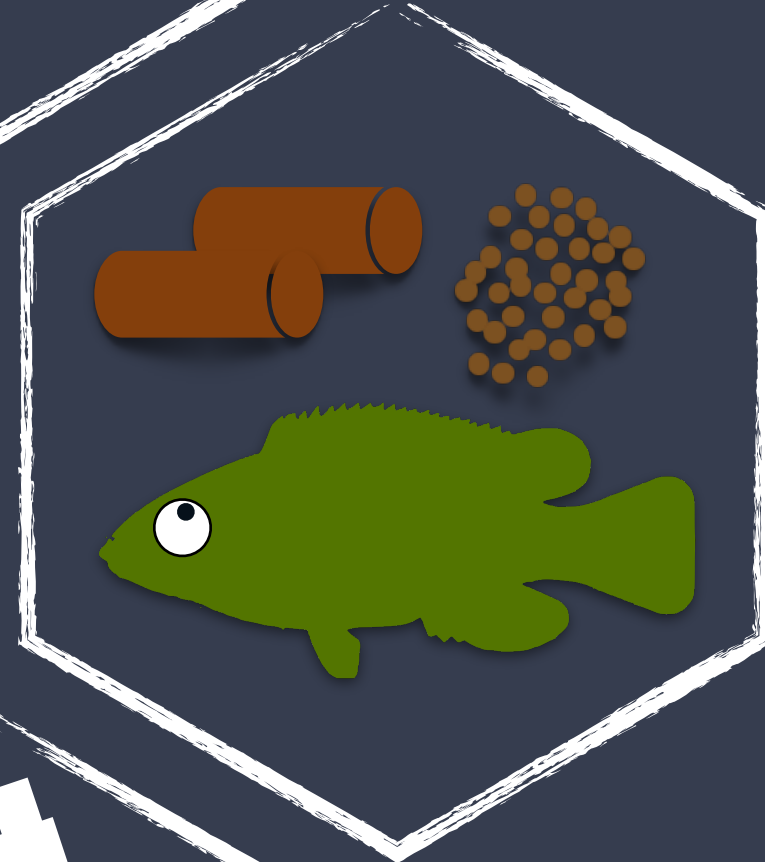


- God
- Noe redusert
- Tydlig redusert
- Alvorlig redusert

Velferd hos berggylt



Forbedre velferd i settefiskfasen



Forbedre fôringsstrategier



Generelt behov for mer forskning

Takk for oppmerksomheten!

